





LOC/DME I-RNO <b>110.9</b> Chan <b>46</b>	APP CRS <b>167°</b>	Rwy Idg <b>10001</b> TDZE <b>4415</b> Apt Elev <b>4415</b>
---	------------------------	--

ILS Z or LOC Z RWY 17R  
RENO/TAHOE INTL (RNO)

DME required. RNP APCH - GPS. From HOBEO or KLOCK: RF		MALSR 	MISSED APPROACH: Climb to 13000 on the RNAV missed approach route to YARKU and hold, continue climb-in-hold to 13000. *Missed approach requires minimum climb of 390 feet per NM to 8000.
 Circling Rwy 8 NA at night.  # For inop ALS, increase S-ILS 17R all Cats visibility to 2 SM.  -13°C *RVR 1800 authorized with use of FD or AP or HUD to DA.			

D-ATIS	NORCAL APP CON				RENO TOWER		GND CON	CLNC DEL		CPDLC
135.8 363.0	119.2	279.55	126.3	353.9	118.7	257.8	121.9 348.6	124.9	370.85	

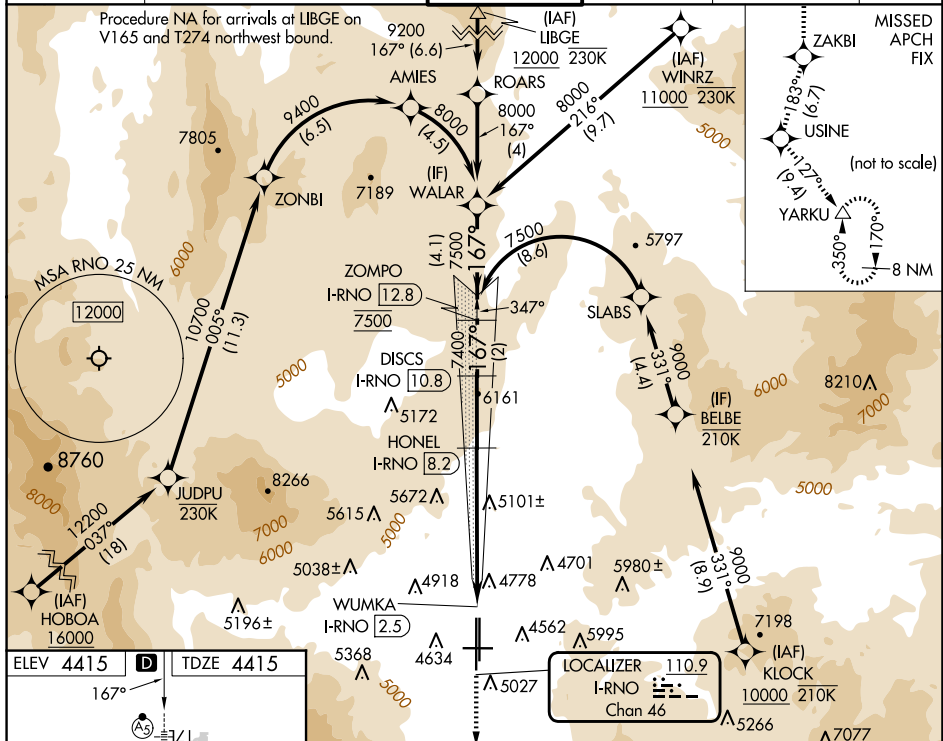


Figure 10-1 illustrates a 4-segment S-ILS profile for Runway 26. The profile is shown as a series of connected line segments with specific altitudes and distances. Key features include:

- Runway 26:** Indicated by a horizontal line with a '26' at the right end.
- Thresholds:** 35L at the left end and 35R at the right end.
- Profile Segments:**
  - Segment 1: 0.6 NM, starting at 35L and ending at 6102 X 150.
  - Segment 2: 2.2 NM, starting at 6102 X 150 and ending at 9000 X 150.
  - Segment 3: 3.5 NM, starting at 9000 X 150 and ending at 7400.
  - Segment 4: 2.6 NM, starting at 7400 and ending at 8000.
- Altitudes:** 35L, 35R, 6102 X 150, 9000 X 150, 7400, 8000, 7500, 6540, 7400.
- Distances:** 0.6, 2.2 NM, 3.5 NM, 2.6 NM, 4.1 NM.
- Other Labels:** TWR, WUMKA, I-RNO, HONEL, DISCS, ZOMPO, I-RNO, I-RNO, GS 3.10° TCH 59, WALAR.