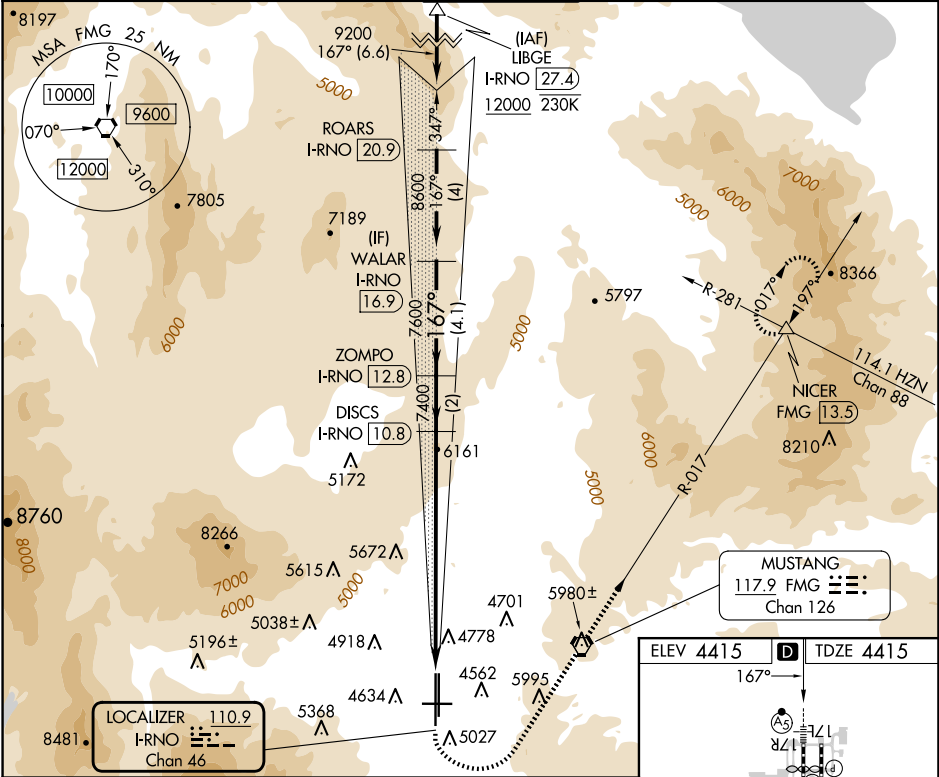


LOC/DME I-RNO	APP CRS	Rwy Idg	10001
110.9	167°	TDZE	4415
Chan 46		Apt Elev	4415

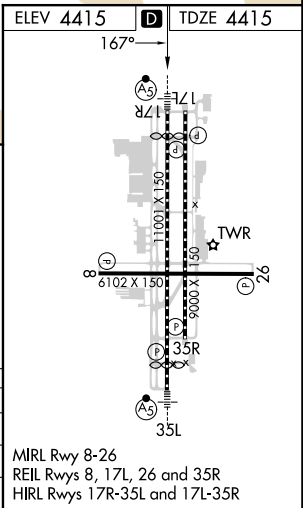
ILS Y RWY 17R
RENO/TAHOE INTL (RNO)

DME required.	MALS R	MISSED APPROACH: Climb to 6300 then climbing left turn to 11000 direct FMG VORTAC and on FMG VORTAC R-017 to NICER INT/FMG 13.5 DME and hold, continue climb-in-hold to 11000. * Missed approach requires minimum climb of 350 feet per NM to 8000. ** Missed approach requires minimum climb of 275 feet per NM to 8000.
# Inop table does not apply. † For inop ALS, increase S-ILS -13°C 17R visibility to 1½ SM.		

D-ATIS	NORCAL APP CON	RENO TOWER	GND CON	CLNC DEL	CPDLC
135.8 363.0	119.2 279.55 126.3 353.9	118.7 257.8	121.9 348.6	124.9 370.85	



6300	11000	FMG	NICER	DISCS	ZOMPO	WALAR
↑	↙	FMG R-017	△	I-RNO [10.8]	I-RNO [12.8]	I-RNO [16.9]
VGSI and ILS glidepath not coincident (VGSI Angle 3.06/TCH 77).						
7400 7600 8600						
8.9 NM 2 NM 4.1 NM						
GS 3.10°	TCH 59					
CATEGORY	A	B	C	D	E	
S-ILS 17R*†	4915/50 500 (500-1)					
S-ILS 17R**#	5415-4 1000 (1000-4)					
S-ILS 17R#	5915-5 1500 (1500-5)					



SW-4, 10 JUL 2025 to 07 AUG 2025

SW-4, 10 JUL 2025 to 07 AUG 2025