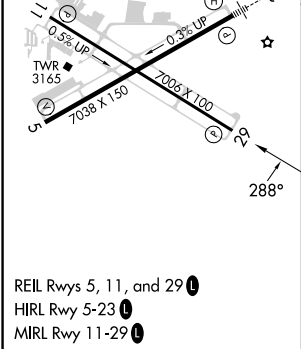
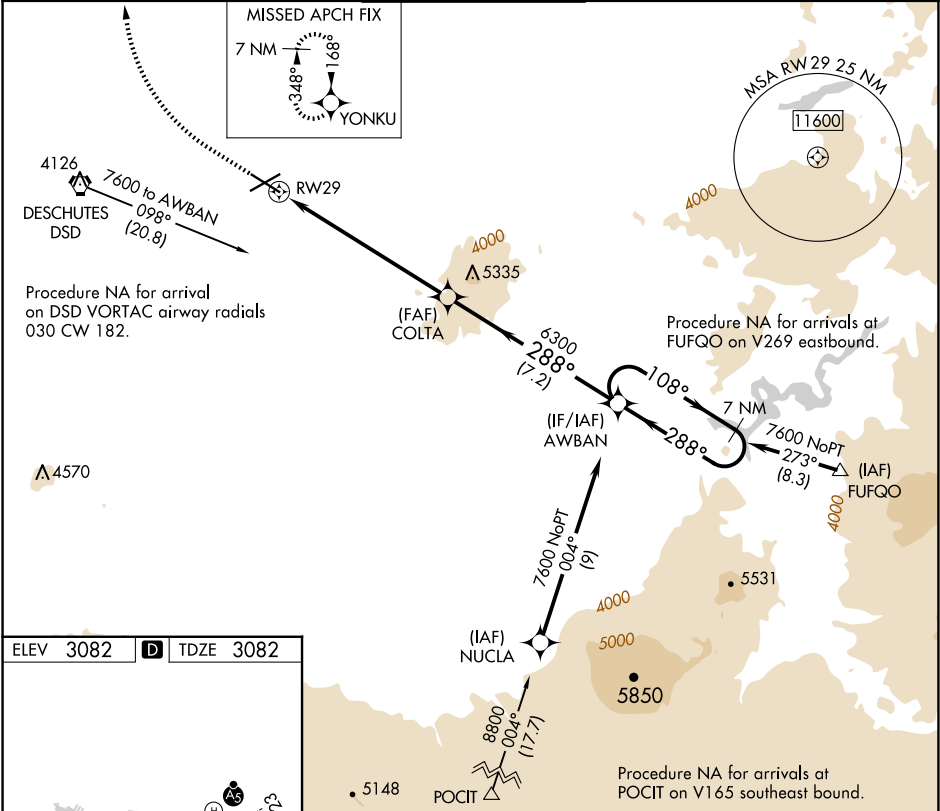


WAAS CH 90214 W29A	APP CRS 288°	Rwy Ldg TDZE Apt Elev 7006 3082 3082
----------------------------------------	------------------------	--------------------------------------------------------------------------

RNAV (GPS) Z RWY 29

ROBERTS FLD (RDM)

RNP APCH-GPS.		MISSED APPROACH: Climb to 4000 then climbing right turn to 7000 direct YONKU and hold, continue climb-in-hold to 7000.		
For uncompensated Baro-VNAV systems, LNAV/VNAV NA below -18°C or above 43°C.				
-17°C				
ATIS 119.025	SEATTLE CENTER 126.15 269.475	REDMOND TOWER★ 124.5 (CTAF) 0 256.8	GND CON 121.8	UNICOM 122.95



ELEV 3082 D TDZE 3082		VGSi and RNAV glidepath not coincident (VGSi Angle 3.00/TCH 50).		7 NM Holding Pattern
4000	7000	YONKU	AWBAN	
COLTA		GP 4.20° TCH 43		
RW29				
7.1 NM		7.2 NM		
CATEGORY	A	B	C	D
LPV DA	3368-1	286 (300-1)	NA	
LNAV/VNAV DA	3368-1	286 (300-1)	NA	