


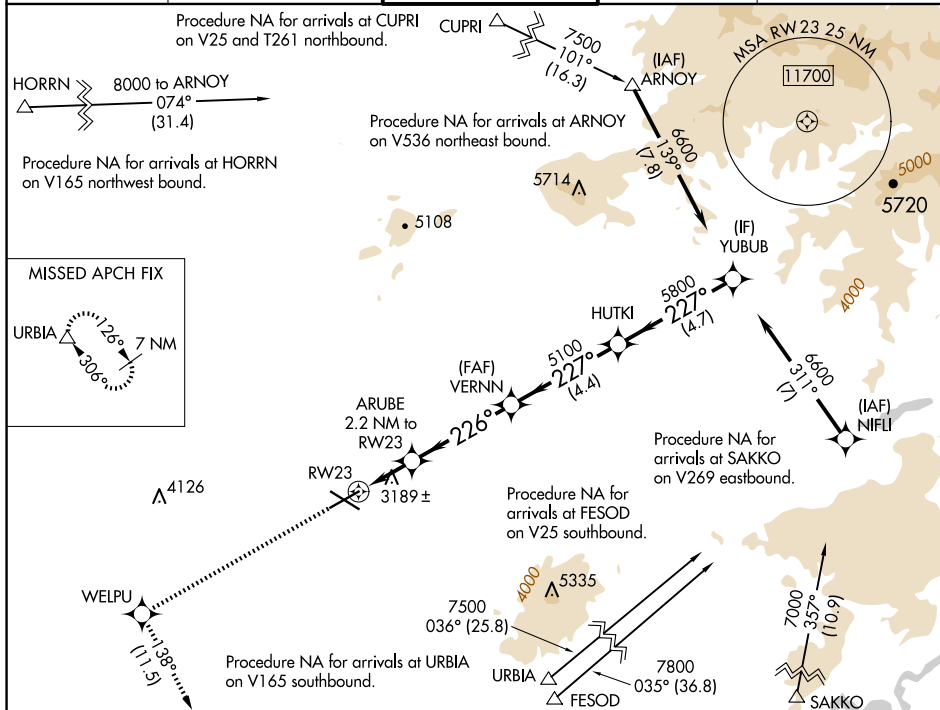
WAAS CH 82514 W23A	APP CRS 226°	Rwy Ldg 7031 TDZE 3067 Apt Elev 3080
--	------------------------	---

RNAV (GPS) Y RWY 23

ROBERTS FLD (RDM)

<p>T A * -17°C</p>	<p>For uncompensated Baro-VNAV systems, LNAV/VNAV NA below -20°C (-4°F) or above 53°C (128°F). DME/DME RNP-0.3 NA. For inop ALS, increase LNAV/VNAV all Cats visibility to ½ SM and LNAV Cat C/D visibility to 1 SM.</p>	<p>MALSR</p> 	<p>MISSED APPROACH: Climb to 8500 direct WELPU and on track 138° to URBIA and hold, continue climb-in-hold to 8500.</p>
---	--	--	---

ATIS 119.025	SEATTLE CENTER 126.15 269.475	REDMOND TOWER★ 124.5 (CTAF) 0 256.8	GND CON 121.8	UNICOM 122.95
-----------------	----------------------------------	--	------------------	------------------



ELEV 3080 **D** TDZE 3067

8500 WELPU URBIA VGSB and RNAV glidepath not coincident (VGSB Angle 3.00/TCH 51).

↑ ✦ tr 138° △

*LNAV only

ARUBE 2.2 NM to RW23

VERNN 5100 HUTKI YUBUB

226° 227° 227°

5100 5800 6600

*1.1 NM to RW23 *3800 *5100

1.1 NM 1.1 NM 4.1 NM 4.4 NM 4.7 NM

CATEGORY A B C D

LPV DA 3267-1/2 200 (200-1/2)

LNAV/VNAV DA 3383-5/8 316 (400-5/8)

LNAV MDA 3440-1/2 373 (400-1/2) 3440-3/4 373 (400-3/4)

C CIRCLING 3540-1 3560-1 3640-1 1/2 3760-2 1/4
460 (500-1) 480 (500-1) 560 (600-1 1/2) 680 (700-2 1/4)

REIL Rws 5, 11, and 29 **D**
HIRL Rwy 5-23 **D**
MIRL Rwy 11-29 **D**