

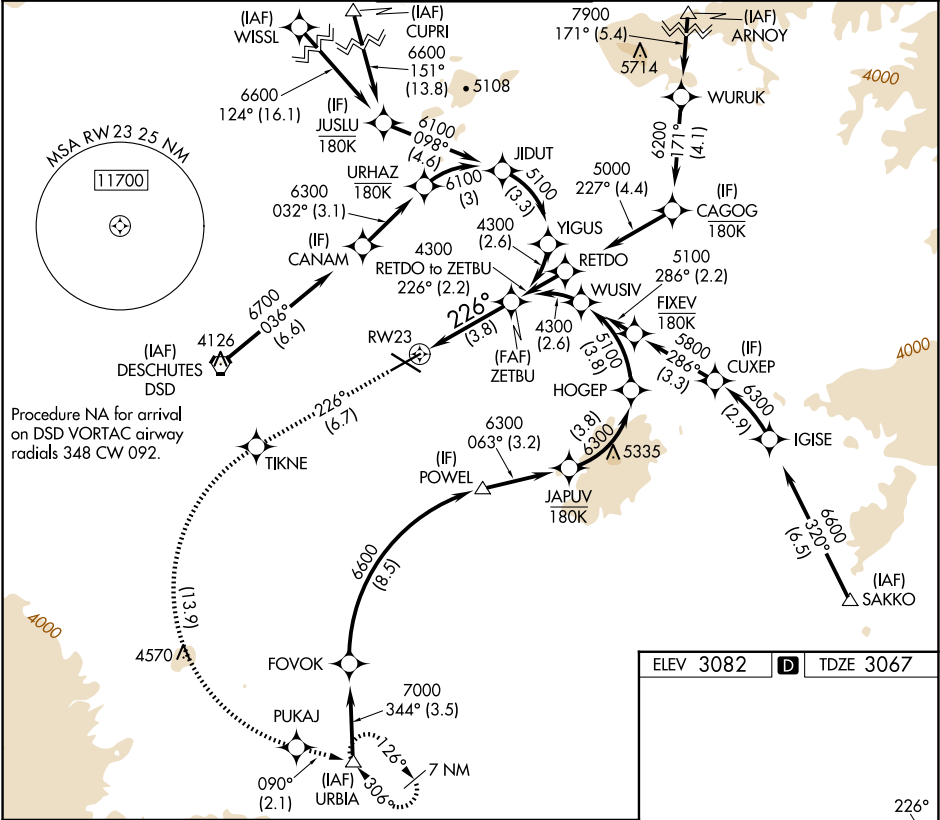
APP CRS	Rwy Ldg	7031
226°	TDZE	3067
	Apt Elev	3082

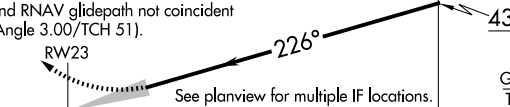
RNAV (RNP) Z RWY 23

ROBERTS FLD (RDM)

RNP AR APCH - GPS, RF. Authorization required. From ARNOY: min RNP 0.70.	MALSR	MISSED APPROACH: Climb to 8500 on track 226° to TIKNE left turn to PUKAJ and on track 090° to URBIA and hold, continue climb-in-hold to 8500.
<div>For uncompensated Baro-VNAV systems, procedure NA below -16°C or above 54°C. For inop ALS, increase RNP 0.10 all Cats visibility to ¾ SM. For inop ALS, increase RNP 0.30 all Cats visibility to 1¾ SM.</div>		

ATIS	SEATTLE CENTER	REDMOND TOWER★	GND CON	UNICOM
119.025	126.15 269.475	124.5 (CTAF) 256.8	121.8	122.95



8500 ↑ fr 226°	TIKNE ✧	PUKAJ ✧	fr 090° △	URBIA	ZETBU 4300
VGSI and RNAV glidepath not coincident (VGSI Angle 3.00/TCH 51).					
					
CATEGORY	A	B	C	D	
RNP 0.10 DA	3322-½ 255 (300-½)				
RNP 0.30 DA	3552-1 485 (500-1)				
AUTHORIZATION REQUIRED					

ELEV 3082 D TDZE 3067

Planview diagram showing runway layout and taxiway intersections. Key features include: RWY 23, RWY 11, RWY 29, RWY 5, RWY 25, RWY 31, RWY 32, RWY 33, RWY 34, RWY 35, RWY 36, RWY 37, RWY 38, RWY 39, RWY 40, RWY 41, RWY 42, RWY 43, RWY 44, RWY 45, RWY 46, RWY 47, RWY 48, RWY 49, RWY 50, RWY 51, RWY 52, RWY 53, RWY 54, RWY 55, RWY 56, RWY 57, RWY 58, RWY 59, RWY 60, RWY 61, RWY 62, RWY 63, RWY 64, RWY 65, RWY 66, RWY 67, RWY 68, RWY 69, RWY 70, RWY 71, RWY 72, RWY 73, RWY 74, RWY 75, RWY 76, RWY 77, RWY 78, RWY 79, RWY 80, RWY 81, RWY 82, RWY 83, RWY 84, RWY 85, RWY 86, RWY 87, RWY 88, RWY 89, RWY 90, RWY 91, RWY 92, RWY 93, RWY 94, RWY 95, RWY 96, RWY 97, RWY 98, RWY 99, RWY 100.

REIL Rwy 5, 11, and 29
HIRL Rwy 5-23
MIRL Rwy 11-29

NW-1, 10 JUL 2025 to 07 AUG 2025

NW-1, 10 JUL 2025 to 07 AUG 2025