

WAAS CH <b>42609</b> <b>W33A</b>	APP CRS <b>331°</b>	Rwy Idg TDZE Apt Elev	<b>5431</b> <b>352</b> <b>352</b>
--	------------------------	-----------------------------	---

RNAV (GPS) RWY 33

RED BLUFF MUNI (RBL)

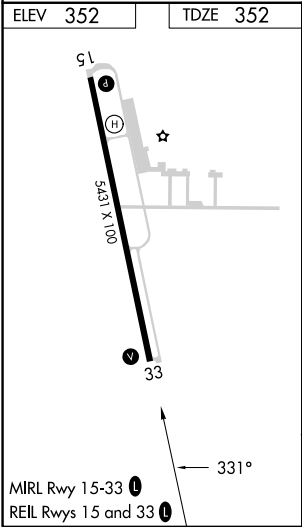
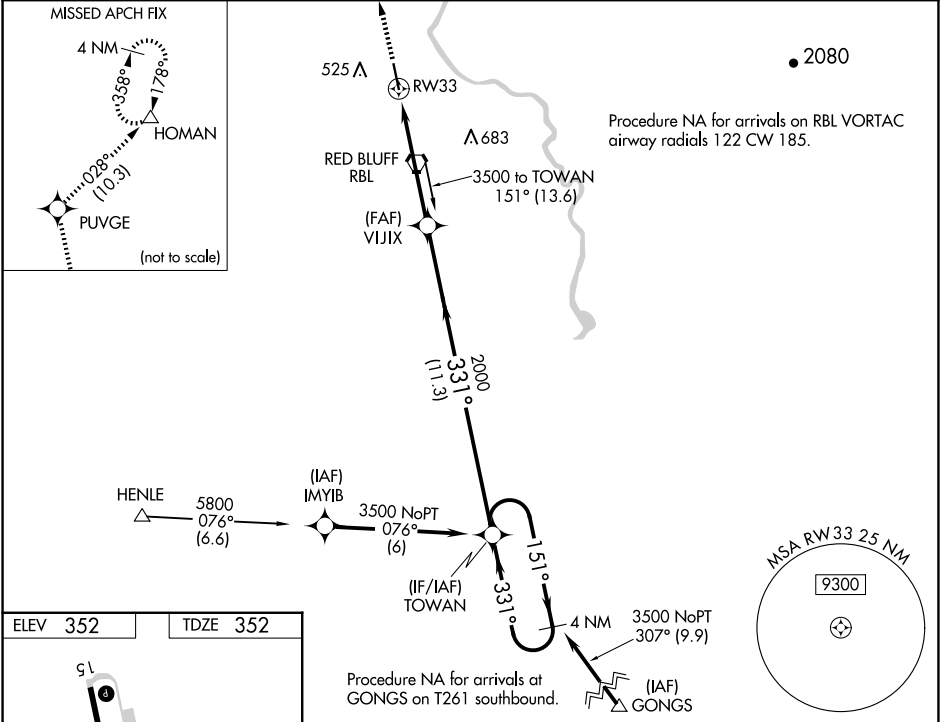
⚠

Baro-VNAV NA when using Redding altimeter setting. For uncompensated Baro-VNAV systems, LNAV/VNAV NA below -15°C (5°F) or above 48°C (118°F). DME/DME RNP-0.3 NA. When local altimeter setting not received, use Redding altimeter setting and increase all DA/MDA 80 feet and increase LPV all Cats visibility ¼ SM, LNAV/VNAV all Cats visibility ¼ SM, LNAV Cat C visibility ¼ SM and Circling Cats C and D visibility ¼ SM.

MISSED APPROACH:

Climb to 4000 direct PUVGE and track 028° to HOMAN and hold.

ASOS <b>120.775</b>	OAKLAND CENTER <b>132.2 350.3</b>	UNICOM <b>123.0 (CTAF) 0</b>
------------------------	--------------------------------------	---------------------------------



4000	PUVGE	tr 028°	HOMAN	TOWAN	4 NM Holding Pattern
			VIJIX	151°	3500
			2000	331°	2000
			5 NM	11.3 NM	GP 3.00° TCH 40
CATEGORY	A	B	C	D	
LPV DA		602-1	250 (300-1)		
LNAV/VNAV DA		718-1¼	366 (400-1¼)		
LNAV MDA	780-1	428 (500-1)	780-1¼ 428 (500-1¼)	780-1½ 428 (500-1½)	
CIRCLING	860-1	508 (600-1)	900-1½ 548 (600-1½)	1060-2¼ 708 (800-2¼)	