

WAAS CH <b>73008</b> <b>W15A</b>	APP CRS <b>151°</b>	Rwy Idg <b>5431</b> TDZE <b>352</b> Apt Elev <b>352</b>
--	------------------------	---

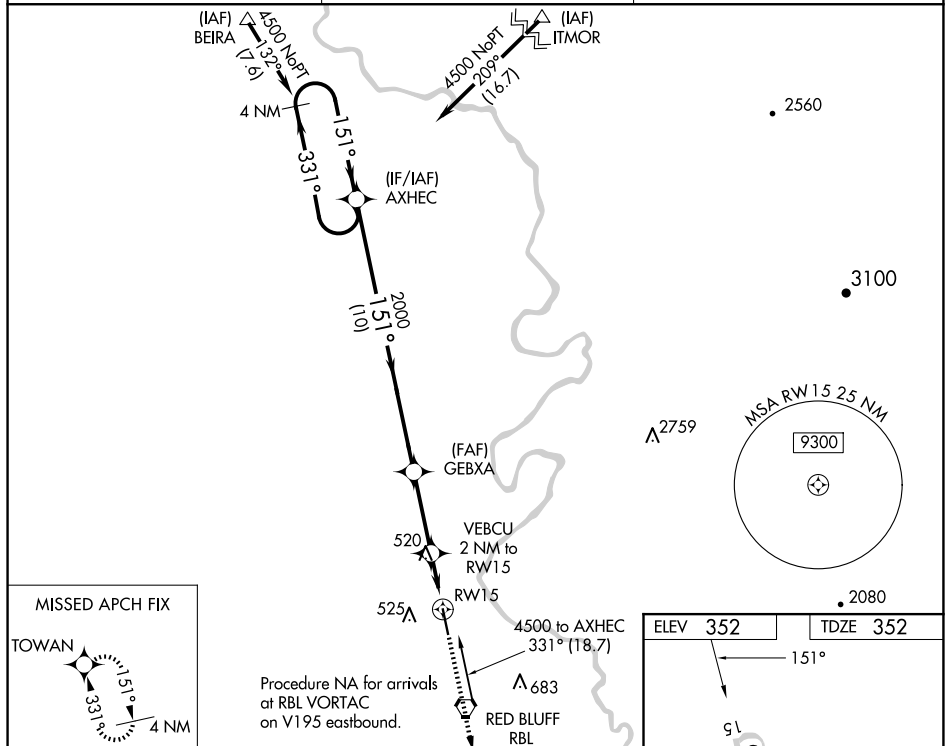
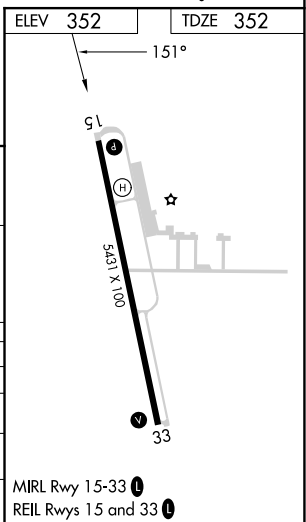
RNAV (GPS) RWY 15  
RED BLUFF MUNI (RBL)

RNP APCH.

**T** Circling to Rwy 33 NA at night. Baro-VNAV and VDP NA when using Redding altimeter setting.  
**A** For uncompensated Baro-VNAV systems, LNAV/VNAV NA below -2°C or above 54°C. When local altimeter setting not received; use Redding altimeter setting and increase LPV DA to 674 feet and increase LNAV/VNAV DA to 860 feet and increase visibility all Cats ½ SM; increase all MDAs 80 feet and LNAV visibility Cats C/D ⅓ SM and Circling visibility Cats C/D ¼ SM.

**MISSED APPROACH:** Climb to 3500 direct TOWAN and hold.

ASOS <b>120,775</b>	OAKLAND CENTER <b>132.2 350.3</b>	UNICOM <b>123.0 (CTAF) 0</b>
------------------------	--------------------------------------	---------------------------------

[illegible]

SW-2, 10 JUL 2025 to 07 AUG 2025