

TACAN Y RWY 13

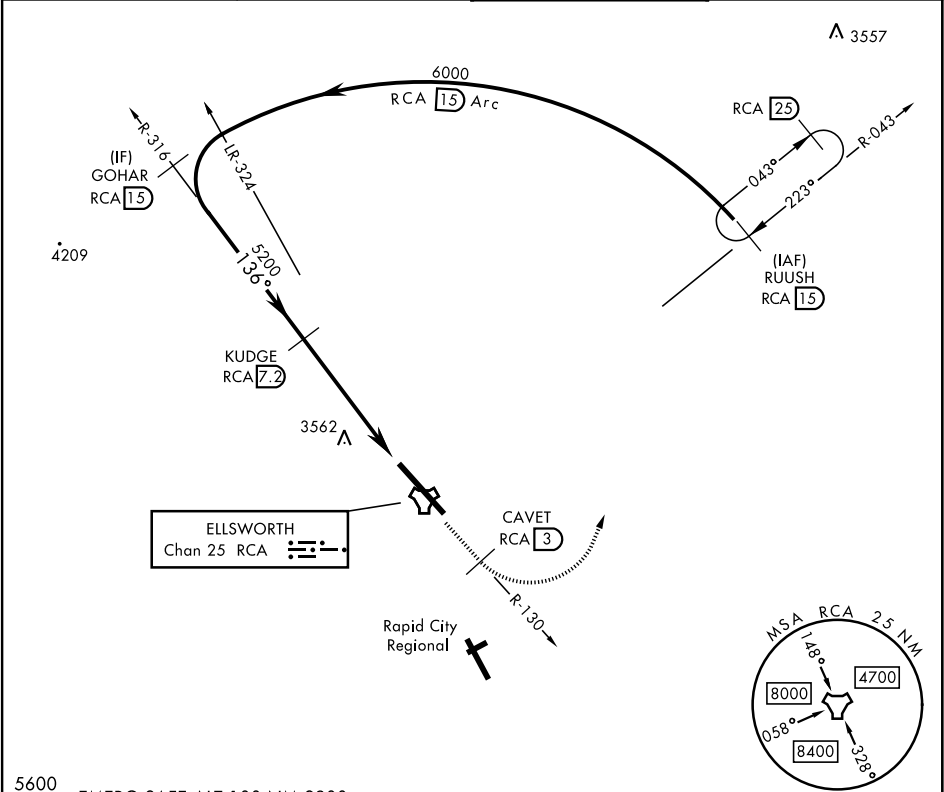
TACAN RCA Chan 25	APCH CRS 136°	Rwy Idg 13,497 TDZE 3276 Arprt Elev 3276	[USAF]	ELLSWORTH AFB (KRCA)
----------------------	------------------	--	--------	----------------------

▼ \*When ALS inop, increase CAT AB RVR to 55 and vis to 1 mile, CAT CDE vis to 1½ miles.  
\*\*CAT E circling restricted to 28th BW aircraft only; 28th BW aircraft will remain within Class D airspace.

ALSF-1  
(A1)

MISSED APPROACH: Track outbound RCA R-130 to 3 DME (CAVET), then turn left to join RCA R-043 to RCA 15 DME (RUUSH) and hold. Maintain 6000.

ATIS ★ 120.625 269.9	APP CON 119.5 259.1	TOWER ★ 126.05 253.5	GND CON 121.8 275.8
-------------------------	------------------------	-------------------------	------------------------



5600 EMERG SAFE ALT 100 NM 9800

RUUSH RCA 15	GOHAR RCA 15	KUDGE RCA 7.2	CAVET RCA 3	RUUSH RCA 15	ELEV 3276	TDZE 3276
6000	6000	5200	6000	6000	(A1)	
RCA 15 Arc			RCA 2.9		136°	
136°			TUTGE RCA 1.9		13.497-300	
3.05° TCH 62			5.3 NM		0.2% DOWN	
5.3 NM			0.5		3348	
CATEGORY	A	B	C	D	E	
S-13*	3820/24	544 (600-½)	3820/60	544	(600-1½)	
CIRCLING**	3860-1 584 (600-1)	3880-1 604 (700-1)	3880-1¾ 604 (700-1¾)	3980-2¼ 704 (800-2¼)	4040-2¾ 764 (800-2¾)	HIRL Rwy 13-31

TACAN Y RWY 13

NC-1, 10 JUL 2025 to 07 AUG 2025

NC-1, 10 JUL 2025 to 07 AUG 2025