

VORTAC RAP 112.3 Chan 70	APCH CRS 146°	Rwy Idg N/A TDZE N/A Arpt Elev 3276
--------------------------------	------------------	---

- (USAF)

ELLSWORTH AFB (KRCA)

T * CAT E circling restricted to 28th BW aircraft only; 28th BW aircraft will remain within Class D airspace.

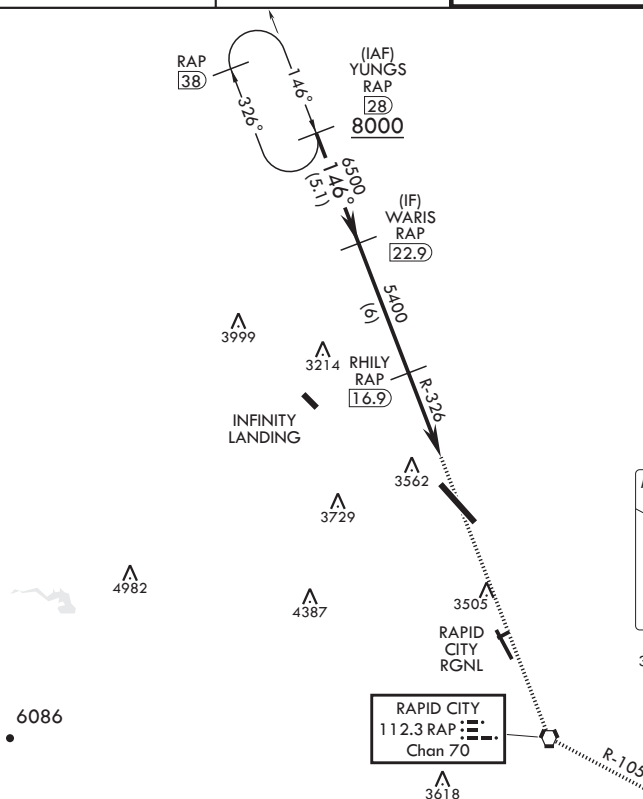
MISSED APPROACH: Track inbound RAP R-326 to RAP VORTAC then turn left to join RAP R-105 outbound to 11 DME and hold. Maintain 6000.

ATIS★
120.625 269.9

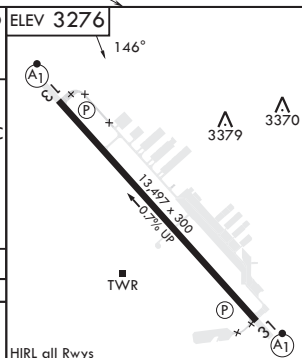
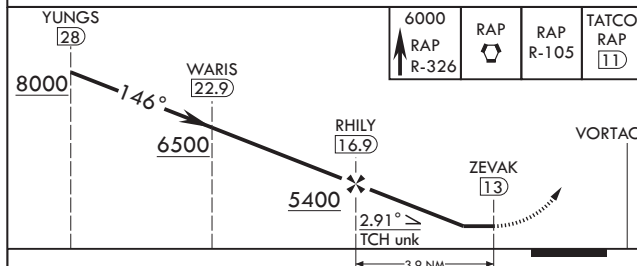
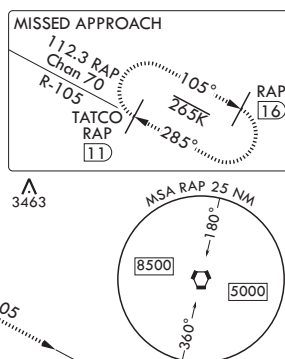
APP CON
119.5 259.1


TOWER★
126.05 253.5

GND CON
121.8 275.8



EMERG SAFE ALT 100 NM 8800



CATEGORY	A	B	C	D	E
 CIRCLING*	3860-1 $\frac{3}{8}$ 584 (600-1 $\frac{3}{8}$)	3880-1 $\frac{3}{8}$ 604 (700-1 $\frac{3}{8}$)	3880-1 $\frac{1}{4}$ 604 (700-1 $\frac{1}{4}$)	3980-2 $\frac{1}{4}$ 704 (800-2 $\frac{1}{4}$)	4040-2 $\frac{3}{4}$ 764 (800-2 $\frac{3}{4}$)

RAPID CITY, SOUTH DAKOTA

44°09'N - 103°06'W

ELLSWORTH AFB (KRCA)

Amdt 2 22JUN17

TACAN-A

NC-1, 10 JUL 2025 to 07 AUG 2025

NC-1, 10 JUL 2025 to 07 AUG 2025