

TACAN RCA Chan 25	APCH CRS 136°	Rwy ldg 13,497 TDZE 3276 Arpt Elev 3276	[USAF]	ELLSWORTH AFB (KRCA)
----------------------	------------------	---	--------	----------------------

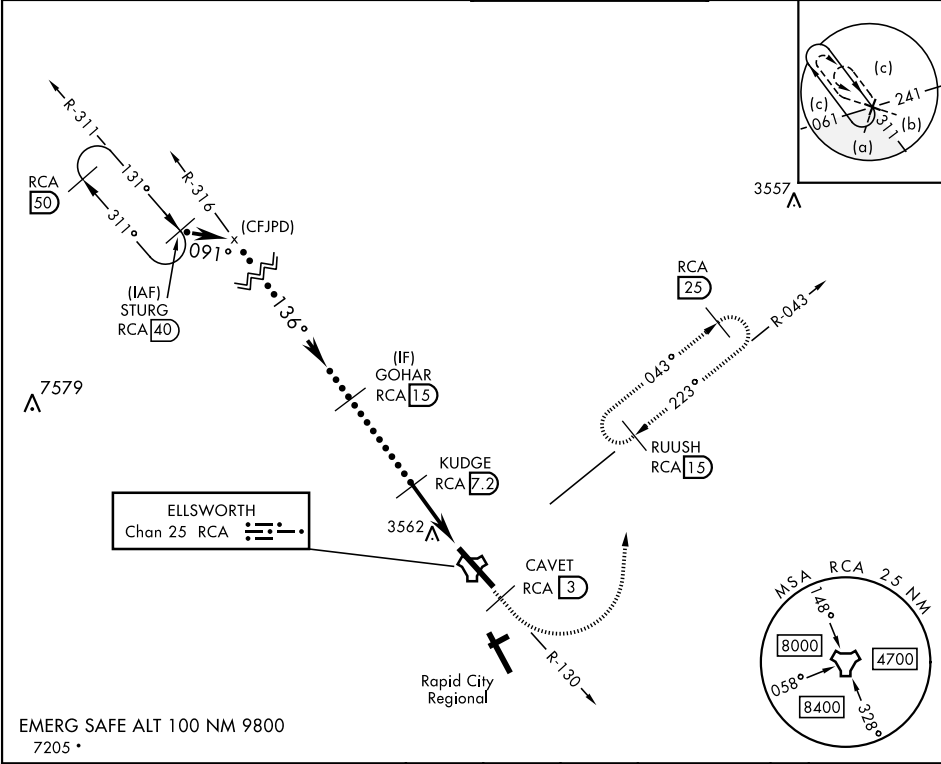
When ALS inop, increase CAT CDE vis to 1½ mile.

CAT E circling restricted to 28th BW aircraft only; 28th BW aircraft will remain within Class D airspace.

ALSF-1

MISSED APPROACH: Track outbound RCA R-130 to 3 DME (CAVET), then turn left to join RCA R-043 to 15 DME (RUUSH) and hold. Maintain 6000.

ATIS ★ 120.625 269.9	APP CON 119.5 259.1	TOWER ★ 126.05 253.5	GND CON 121.8 275.8
-------------------------	------------------------	-------------------------	------------------------



STURGE RCA 40	Intcp R-316 (CFJPD)	GOHAR RCA 15	KUDGE RCA 7.2	CAVET RCA 130 3	6000 RCA R-043	RUUSH RCA 15	ELEV 3276	TDZE 3276
FL190	091°	136°	6000	5200	3.05° TCH 62	5.3 NM	0.3	
CATEGORY	C	D	E					
S-13 ★	3820/60	544 (600-1½)						
CIRCLING ★★	3880-1¾ 604 (700-1¾)	3980-2¼ 704 (800-2¼)	4040-2¾ 764 (800-2¾)					

NC-1, 10 JUL 2025 to 07 AUG 2025

NC-1, 10 JUL 2025 to 07 AUG 2025