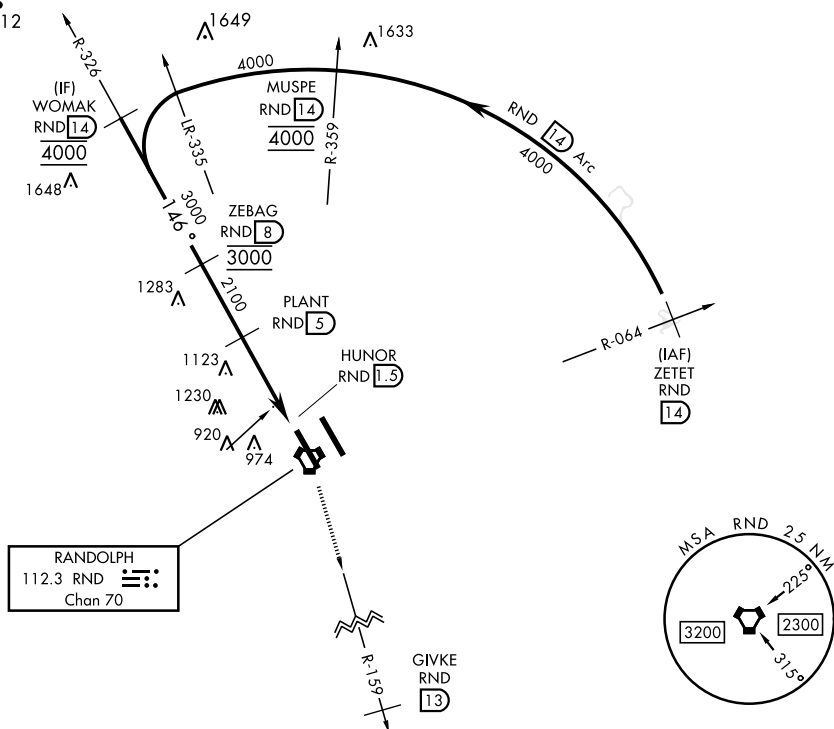


UNIVERSAL CITY, TEXAS

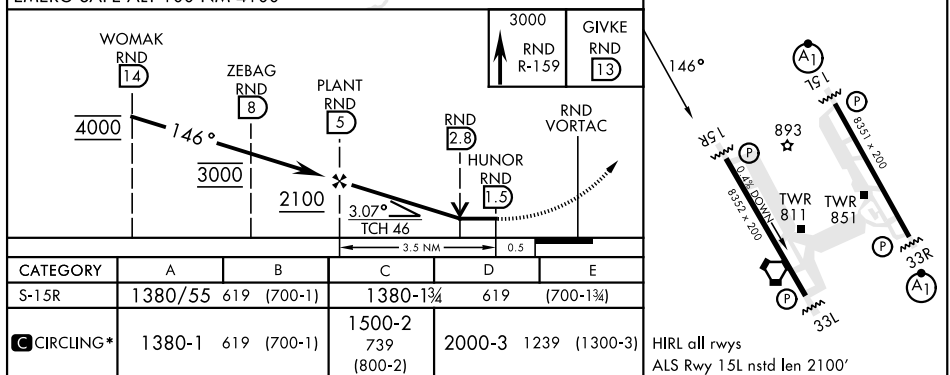
TACAN RWY 15R

VORTAC RND <b>112.3</b> Chan <b>70</b>		APCH CRS <b>146°</b>		Rwy Idg <b>8352</b> TDZE <b>761</b> Arpt Elev <b>761</b>		[USAF]		TACAN RWT 15R	
RADAR required						RANDOLPH AFB (KRND)			
* Circling not authorized NE of Rwy 15R-33L.						MISSED APPROACH: Climb to 3000 out RND VORTAC R-159 to 13 DME (GIVKE). Expect ATC instructions.			
ATIS ★		SAN ANTONIO APP CON		TOWER ★		GND CON		CLNC DL (RWT 15L-33R)	
290.525		128.05 318.1		128.25 294.7		119.65 275.8		338.35	
								HANGOVER ATIS ★	
								327.8	
								HANGOVER TOWER ★	
								120.5 291.1	
								124.75 353.75	



SC-3, 10 JUL 2025 to 07 AUG 2025

EMERG SAFE ALT 100 NM 4100



UNIVERSAL CITY, TEXAS

29°32'N-98°17'W

RANDOLPH AFB (KRND)

Amdt 3 26DEC24

TACAN RWY 15R

SC-3, 10 JUL 2025 to 07 AUG 2025