

RNAV (GPS) RWY 33R

APCH CRS 325°	Rwy Idg 8351 TDZE 733 Arpt Elev 761
-------------------------	--

[USAF]

RANDOLPH AFB (KRND)

RNP APCH - GPS

* When ALS inop, increase CAT ABCD RVR to 40, vis to $\frac{3}{4}$ mile;
CAT E RVR to 45, vis to $\frac{7}{8}$ mile.
** When ALS inop, increase CAT AB RVR to 55 and vis to 1 mile;
CAT CDE vis to $1\frac{3}{8}$ miles.

ALSF-1



MISSED APPROACH: Climb to 1500 then climbing right turn to 3000 direct CESVU. Expect ATC instructions.

ATIS ★	SAN ANTONIO APP CON	TOWER ★	GND CON	CLNC DEL (RWY 15L-33R)	HANGOVER ATIS ★	HANGOVER TOWER ★	HANGOVER GND CON
290.525	128.05 318.1	128.25 294.7	119.65 275.8	338.35	327.8	120.5 291.1	124.75 353.75

***Circling not authorized SW of Rwy 15L-33R.

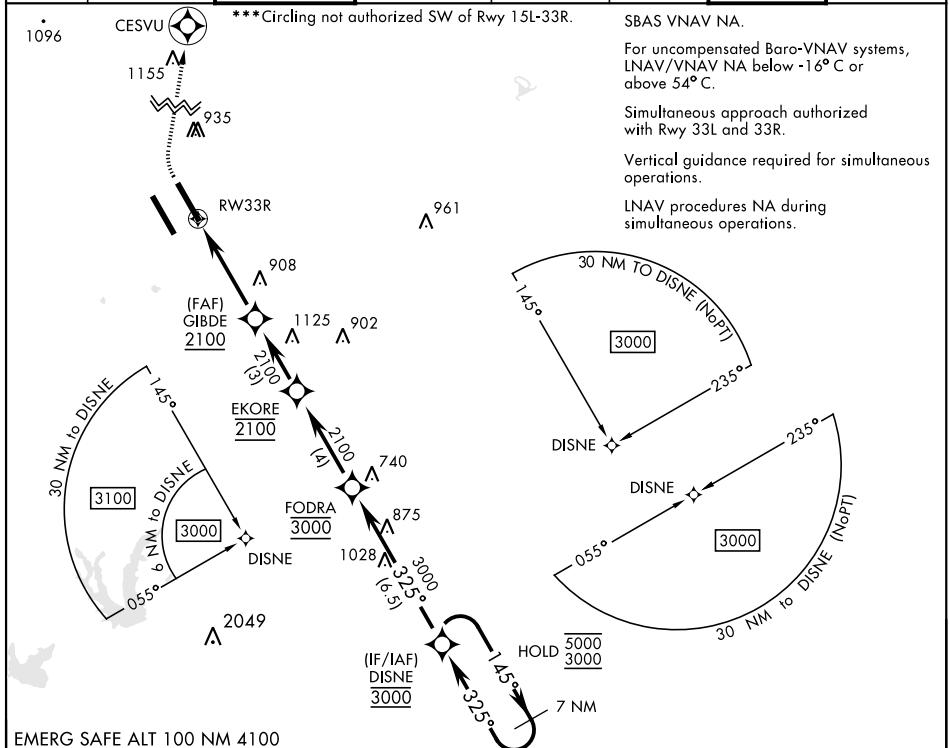
SBAS VNAV NA.

For uncompensated Baro-VNAV systems,
LNAV/VNAV NA below -16°C or
above 54°C.

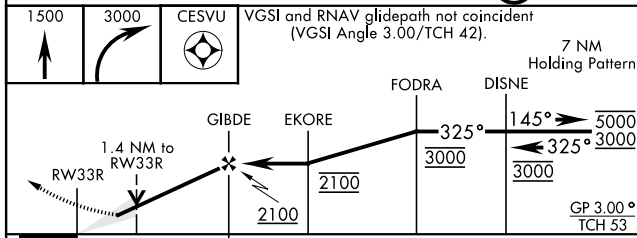
Simultaneous approach authorized with Rwy 33L and 33R.

Vertical guidance required for simultaneous operations.

LNAV procedures NA during simultaneous operations.

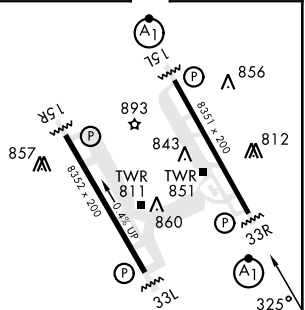


EMERG SAFE ALT 100 NM 4100



		4.2 NM			
CATEGORY	A	B	C	D	E
LNAV/VNAV DA *	983/24 250 (300-½)			987/24 254 (300-½)	1025/24 292 (300-½)
LNAV MDA**	1200/24 467 (500-½)		1200/50	467 (500-1)	
C CIRCLING***	1240-1 479 (500-1)	1260-1½ 499 (500-1½)		1900-3 1139 (1200-3)	

ELEV	761		TDZE	733
------	-----	--	------	-----



HIRL all rwys
ALS Rwy 15L nstd len 2100'