

ILS or LOC RWY 15R

LOC I-JUNY <u>111.3</u>	APCH CRS 145°	Rwy Idg 8352 TDZE 761 Arpt Elev 761
-----------------------------------	-------------------------	--

[USAF]

RANDOLPH AFB (KRND)

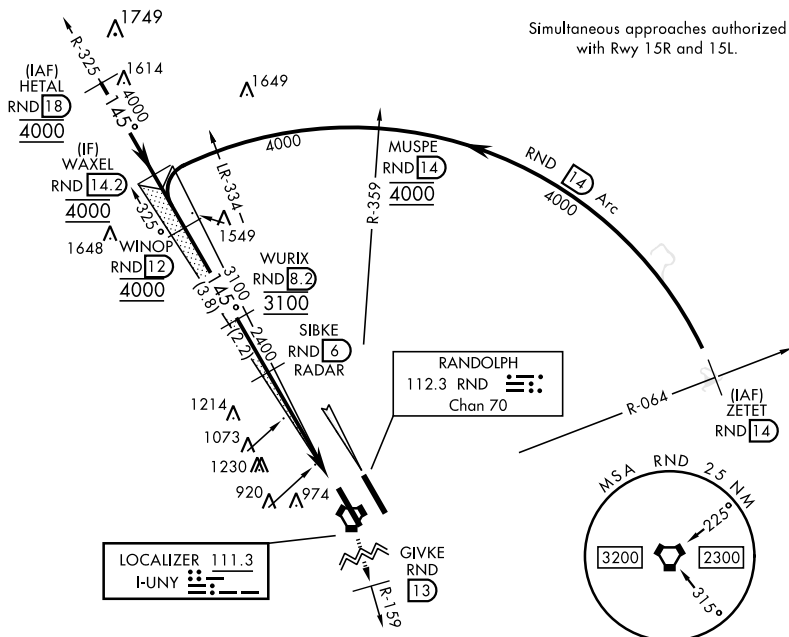
RADAR or DME required

MISSED APPROACH: Climb to 3000 on RND VORTAC R-159 to 13 DME (GIVKE). Expect ATC instructions.

* Circling not authorized NE of Rwy 15R-33L.

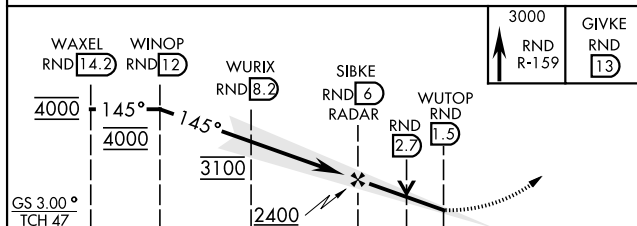
ATIS ★	SAN ANTONIO APP CON	TOWER ★	GND CON	CLNC DEL (RWY 15L-33R)	HANGOVER ATIS ★	HANGOVER TOWER ★	HANGOVER GND CON
290.525	128.05 318.1	128.25 294.7	119.65 275.8	338.35	327.8	120.5 291.1	124.75 353.75

1581



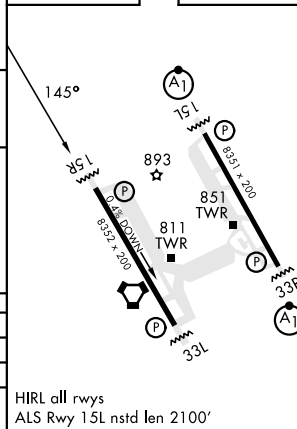
Simultaneous approaches authorized
with Rwy 15R and 15L.

EMERG SAFE ALT 100 NM 4100



CATEGORY		A	B	C	D	E
S-ILS 15R		961/40		200	(200-¾)	
S-LOC 15R		1340/55 579 (600-1)		1340-1 ⁵ / ₈	579 (600-1 ⁵ / ₈)	
C CIRCLING*	1340-1 579 (600-1)		1500-2 739 (800-2)		2000-3 1239 (1300-3)	

ELEV	761		TDZE	761
------	-----	--	------	-----



UNIVERSAL CITY, TEXAS

29°32'N-98°17'W

RANDOLPH AFB (KRND)

Amdt 3 17APR25

ILS or LOC RWY 15R

SC-3, 10 JUL 2025 to 07 AUG 2025

SC-3, 10 JUL 2025 to 07 AUG 2025