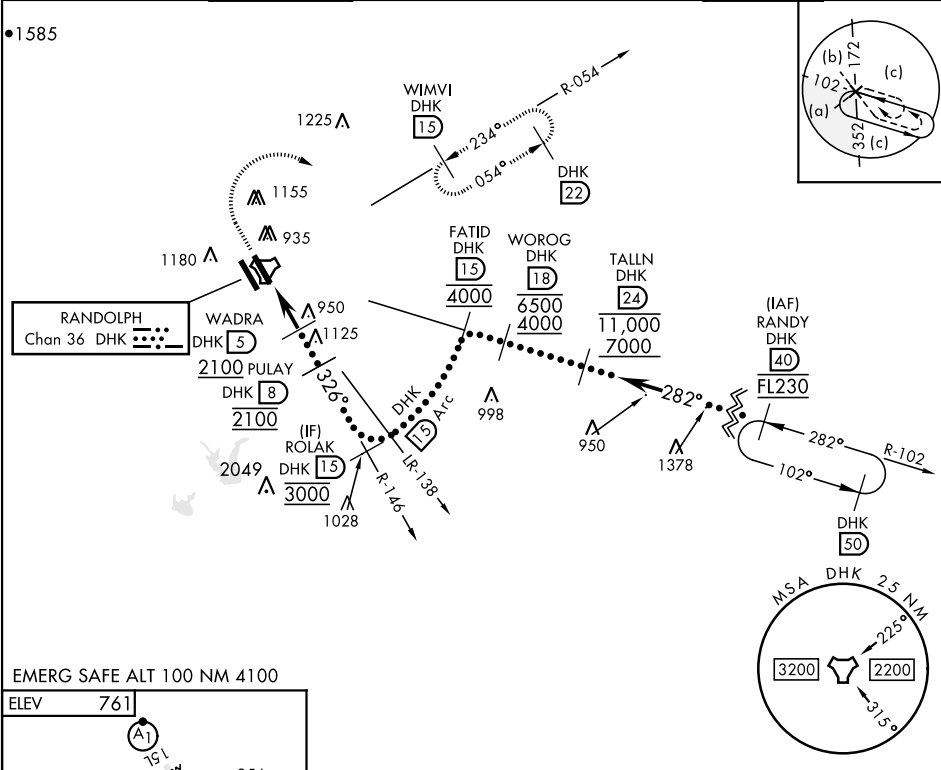


UNIVERSAL CITY, TEXAS

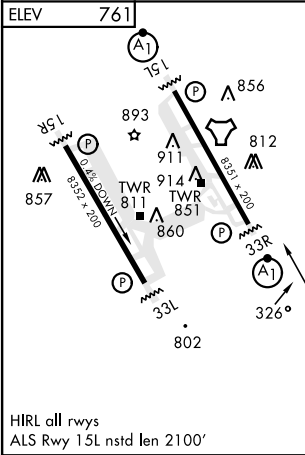
HI-TACAN B

TACAN DHK Chan <b>36</b>		APCH CRS <b>326°</b>		Rwy Idg <b>N/A</b> TDZE <b>N/A</b> Arpt Elev <b>761</b>		[USAF]		RANDOLPH AFB (KRND)		
RADAR required for missed approach monitoring						MISSED APPROACH: Track 327° to 1500, then climbing right turn heading 084° to 3000. Intercept DHK TACAN R-054 direct WIMVI and hold.				
* Circling not authorized SW of Rwy 15L-33R.										
ATIS ★	SAN ANTONIO APP CON		TOWER ★		GND CON		CLNC DEL (RWY 15L-33R)	HANGOVER ATIS ★	HANGOVER TOWER ★	HANGOVER GND CON
290.525	128.05 318.1		128.25 294.7		119.65 275.8		338.35	327.8	120.5 291.1	124.75 353.75

•1585



EMERG SAFE ALT 100 NM 4100



HIRL all rwys  
ALS Rwy 15L nstd len 2100'

