

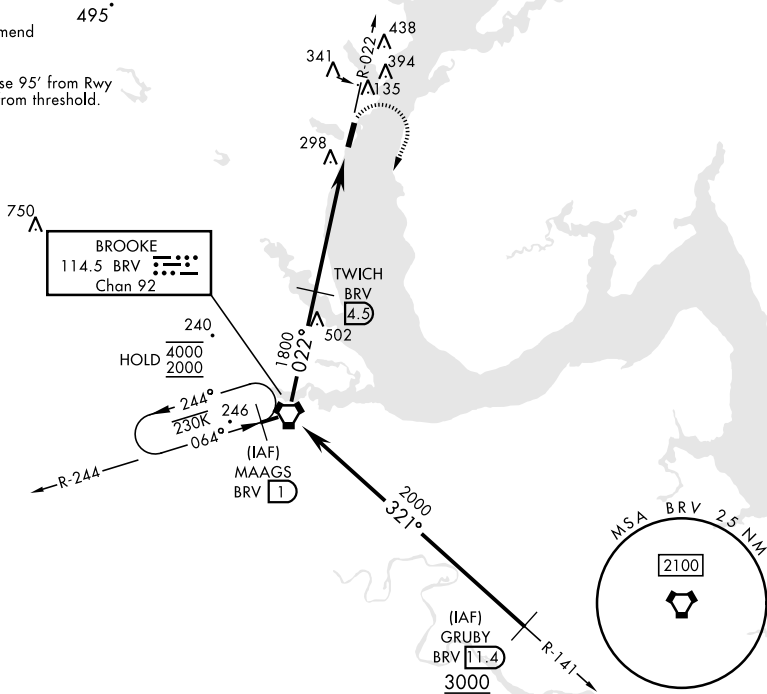
## TACAN RWY 2

BRV VORTAC <b>114.5</b> Chan <b>92</b>	APCH CRS <b>022°</b>	Rwy Idg <b>4250</b> TDZE <b>9</b> Arpt Elev <b>10</b>	[USN]	QUANTICO MCAF (TURNER FLD) (KNYG)
<b>V</b> *Circling not authorized W of Rwy 2-20.			MISSED APPROACH: Climbing right turn to 2000 direct BRV VORTAC, then via BRV R-244 to MAAGS and hold.	

ATIS 263.15	POTOMAC APP/DEP CON 128.525 306.925	TOWER ★ 118.6 (CTAF) 0360.2	GND CON 121.75 348.7	ASR
----------------	--	--------------------------------	-------------------------	-----

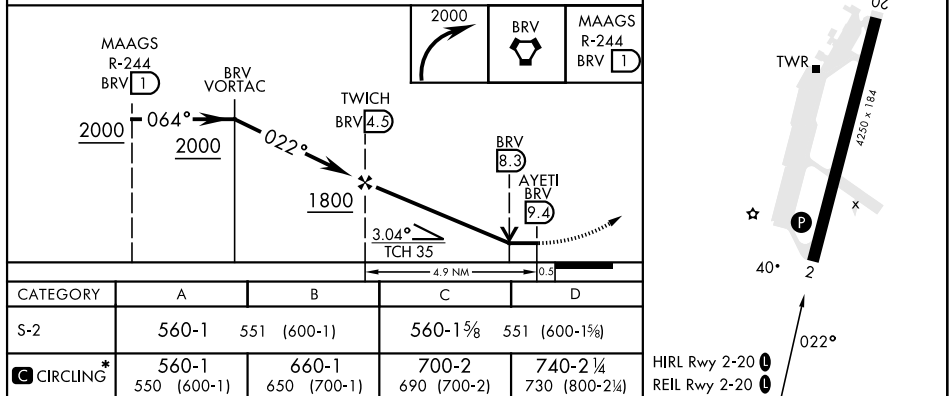
**CAUTION:** Short intermediate, recommend early configuration.

Final approach course 95' from Rwy  
centerline at 3000' from threshold.



NE-3, 10 JUL 2025 to 07 AUG 2025

EMERG SAFE ALT 100 NM 5500



QUANT|CO, VIRGINIA

38°30'N-77°18'W

QUANTICO MCAF (TURNER FLD) (KNYG)

Amdt 4 10AUG23

## TACAN RWY 2