

RNAV (GPS) RWY 2

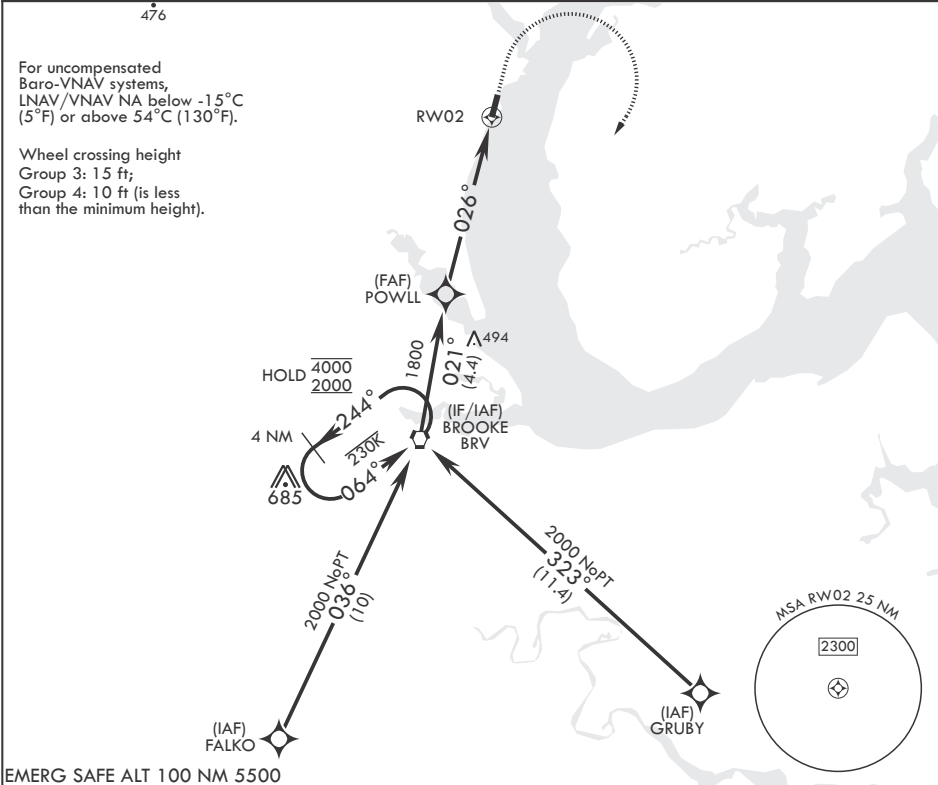
APCH CRS	Rwy Idg	4250
026°	TDZE	9
	Arprt Elev	10

- (USN)

QUANTICO MCAF (TURNER FLD) (KNYG)

RNP APCH	MISSED APPROACH: Climb to 600, then climbing right turn to 2000 direct BRV VORTAC and hold.
* Circling not authorized W of Rwy 2-20.	

ATIS★ 263.15	POTOMAC APP CON/DEP CON 128.525 306.925	TOWER★ 118.6 (CTAF) 360.2	GND CON 121.75 348.7	ASR
-----------------	--	------------------------------	-------------------------	-----



EMERG SAFE ALT 100 NM 5500

4 NM Holding Pattern		VORTAC	600 crs 026°	2000 BRV	ELEV 10	TDZE 9
4000 2000		244° 064°	021° 026°	1800	1.6 NM to RW02	RW02
GP 3.00° TCH 35					5.5 NM	
CATEGORY	A	B	C	D		
LNAV/VNAV DA	429-1 ¹ / ₈ 420 (500-1 ¹ / ₈)	440-1 ¹ / ₄ 431 (500-1 ¹ / ₄)	448-1 ¹ / ₄ 439 (500-1 ¹ / ₄)	459-1 ³ / ₈ 450 (500-1 ³ / ₈)		
LNAV MDA	560-1 550 (600-1)	551 650 (700-1)	560-1 ⁵ / ₈ 690 (700-2)	551 730 (800-2 ¹ / ₄)		
CIRCLING*	560-1 550 (600-1)	660-1 650 (700-1)	700-2 690 (700-2)	740-2 ¹ / ₄ 730 (800-2 ¹ / ₄)		

HIRL all Rwys
REIL all Rwys

BCN

TWR

4250 x 184

2

026°

RNAV (GPS) RWY 2