
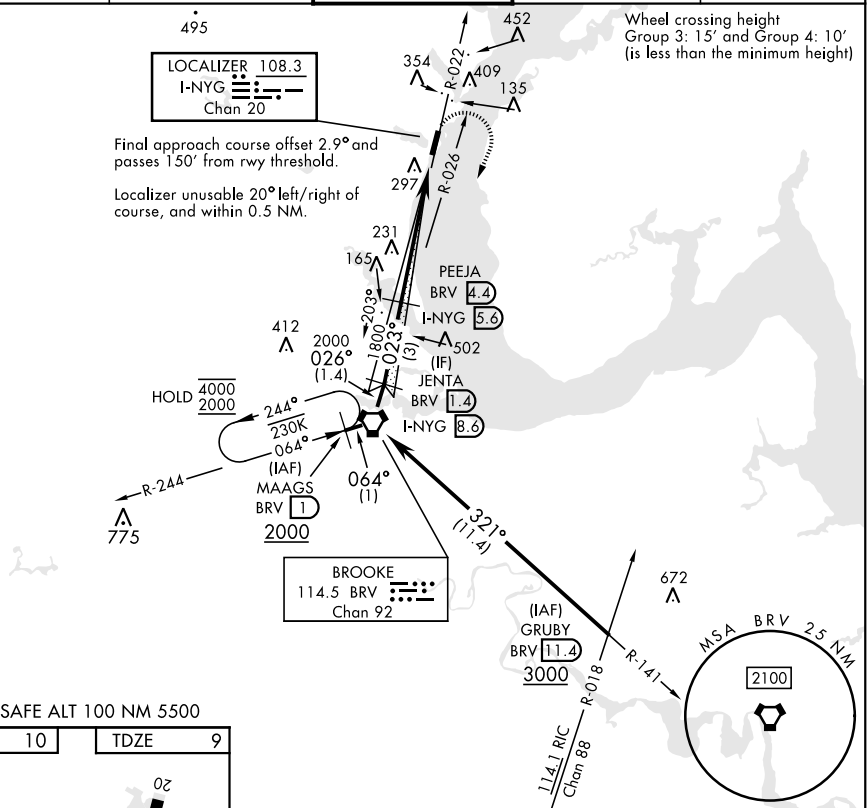


ILS or LOC/DME RWY 2

LOC/DME I-NYG 108.3 Chan 20	APCH CRS 023°	Rwy Idg 4250 TDZE 9 Arpt Elev 10	[USN]	QUANTICO MCAF (TURNER FLD) (KNYG)
TACAN required.			MISSED APPROACH: Climbing right turn to 2000 direct BRV VORTAC, then via BRV R-244 to MAGGS and hold.	
 * Circling not authorized W of Rwy 2-20.				

ATIS 263.15	POTOMAC APP/DEP CON 128.525 306.925	TOWER ★ 118.6 (CTAF) 0360.2	GND CON 121.75 348.7	ASR
----------------	--	--------------------------------	-------------------------	-----

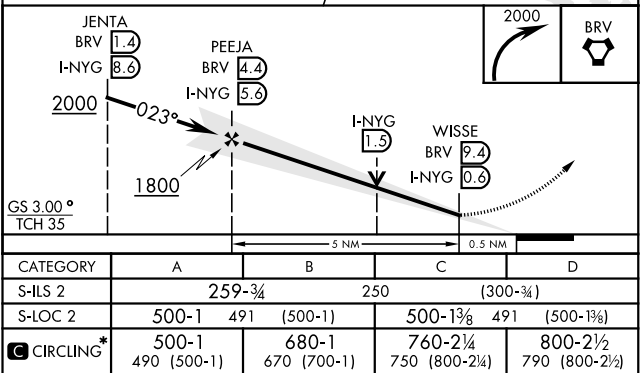
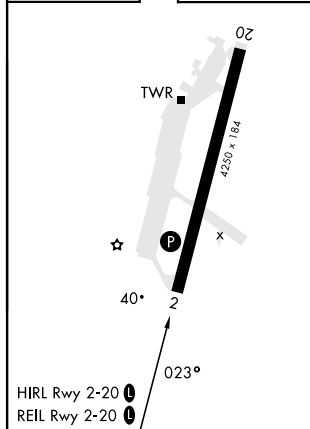


NE-3, 10 JUL 2025 to 07 AUG 2025

NE-3, 10 JUL 2025 to 07 AUG 2025

EMERG SAFE ALT 100 NM 5500

ELEV	10		TDZE	9
------	----	--	------	---



QUANT|CO, VIRGINIA

38°30'N-77°18'W

QUANTICO MCAF (TURNER FLD) (KNYG)

ILS or LOC/DME RWY 2

Amdt 1 29DEC22