

VOR/DME PVD	APP CRS	Rwy Idg	8700
115.6	041°	TDZE	53
Chan 103		Apt Elev	54

VOR RWY 5

RHODE ISLAND TF GREEN INTL (PVD)

⚠

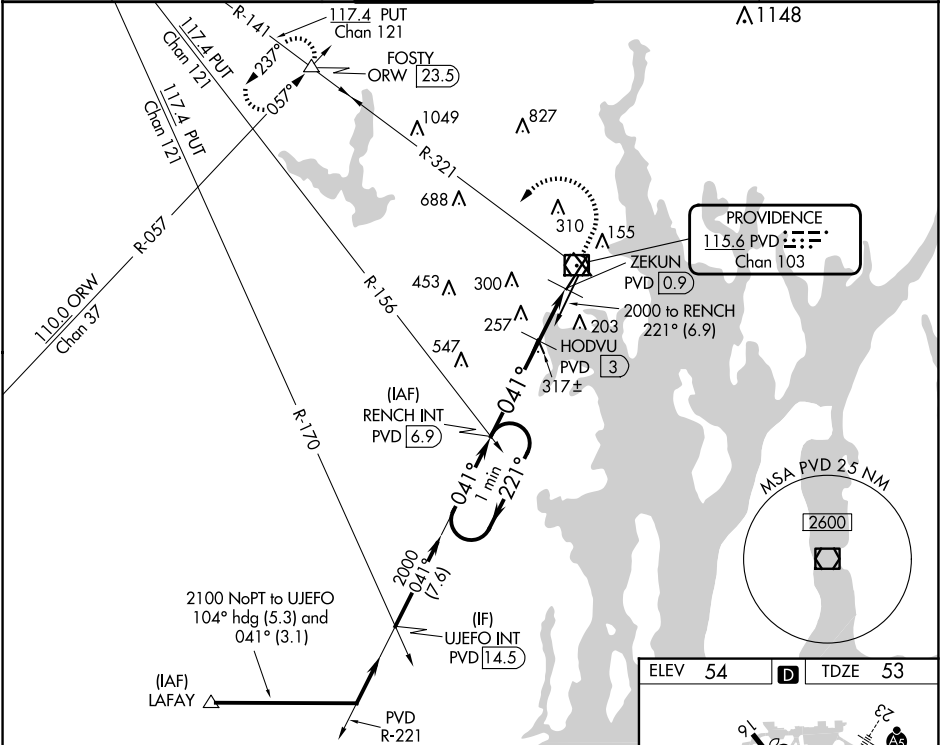
For inop ALS, increase S-5 Cat C/D visibility to 2 SM. When control tower closed: increase S-5 Cats A and B visibility to ¾ SM, and S-5 Cats C and D visibility to 1 ¾ SM. When control tower closed: HODVU fix minimums: increase S-5 Cats A and B visibility to ¾ SM, and S-5 Cats C and D visibility to 1 ¾ SM.

ALSF-2

ⓘ

MISSED APPROACH: Climb to 800 then climbing left turn to 2500 on PVD VOR/DME R-321 to FOSTY INT/ORW 23.5 DME and hold.

D-ATIS	PROVIDENCE APP CON ★	PROVIDENCE TOWER ★	GND CON	CLNC DEL
124.2	123.675 244.875	120.7 (CTAF) 257.8	121.9 348.6	126.65 348.6



One Minute Holding Pattern				
RENCH INT PVD [6.9]				
2000 ← 221° 041° →				
760 041°				
3.00° TCH 55				
3.8 NM 0.7 NM 1.4 NM				
CATEGORY	A	B	C	D
S-5	760/24	707 (800-½)	760-1 ⅝	707 (800-1 ⅝)
CIRCLING	760-1	706 (800-1)	760-2 706 (800-2)	860-2 ½ 806 (900-2 ½)
HODVU FIX MINIMUMS				
S-5	560/24	507 (600-½)	560/55	507 (600-1)
CIRCLING	560-1 506 (600-1)	640-1 586 (600-1)	640-1 ½ 586 (600-1 ½)	860-2 ½ 806 (900-2 ½)

