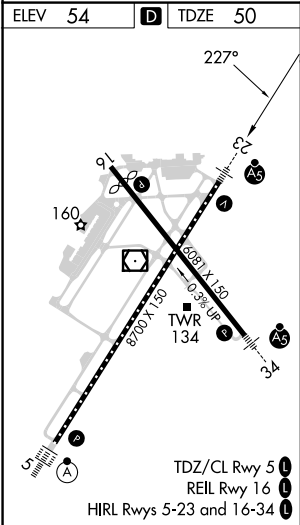
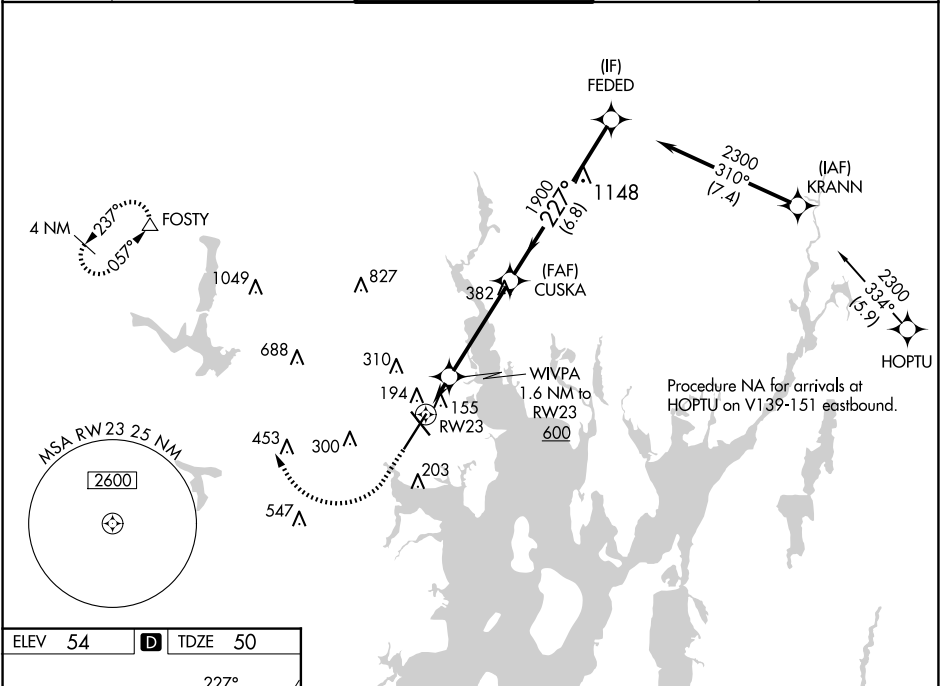


WAAS CH <b>93823</b> <b>W23A</b>	APP CRS <b>227°</b>	Rwy Idg TDZE Apt Elev	<b>8700</b> <b>50</b> <b>54</b>
--	------------------------	-----------------------------	---------------------------------------

RNAV (GPS) Y RWY 23

RHODE ISLAND TF GREEN INTL (PVD)

RNP APCH - GPS.		MALSR	MISSED APPROACH: Climb to 1700 then climbing right turn to 2500 direct FOSTY and hold.	
For uncompensated Baro-VNAV systems, LNAV/VNAV NA below -16°C or above 54°C. Inop ALS, increase LNAV Cats C/D visibility to RVR 6000. *RVR 1800 authorized with use of FD or AP or HUD to DA.				
D-ATIS <b>124.2</b>	PROVIDENCE APP CON ★ <b>123.675 244.875</b>	PROVIDENCE TOWER ★ <b>120.7 (CTAF) 257.8</b>	GND CON <b>121.9 348.6</b>	CLNC DEL <b>126.65 348.6</b>



1700 ↑		2500 ↗		FOSTY △		VGSI and RNAV glidepath not coincident (VGSI Angle 3.00/TCH 41).			
RW23 ↖		WVPA 1.6 NM to RW23		CUSKA 1900		FEDED 2300			
600		1900		227°		GP 3.00° TCH 51			
1.6 NM		4.1 NM		6.8 NM					
CATEGORY		A		B		C		D	
LPV DA *		250/24		200 (200-½)					
LNAV/VNAV DA		355/24		305 (400-½)					
LNAV MDA		460/24		410 (500-½)		460/40		410 (500-¾)	
CIRCLING		560-1 506 (600-1)		640-1 586 (600-1)		640-1½ 586 (600-1½)		860-2½ 806 (900-2½)	

NE-1, 10 JUL 2025 to 07 AUG 2025

NE-1, 10 JUL 2025 to 07 AUG 2025