

APP CRS	Rwy Idg	8700
227°	TDZE	50
	Apt Elev	55

RNAV (RNP) Z RWY 23

RHODE ISLAND TF GREEN INTL (PVD)

⚠

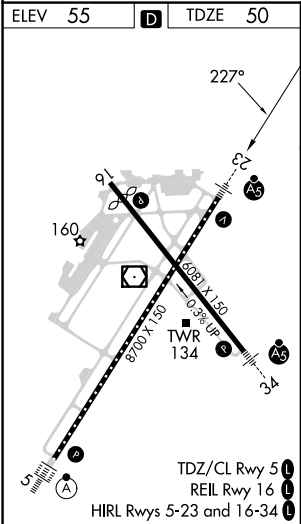
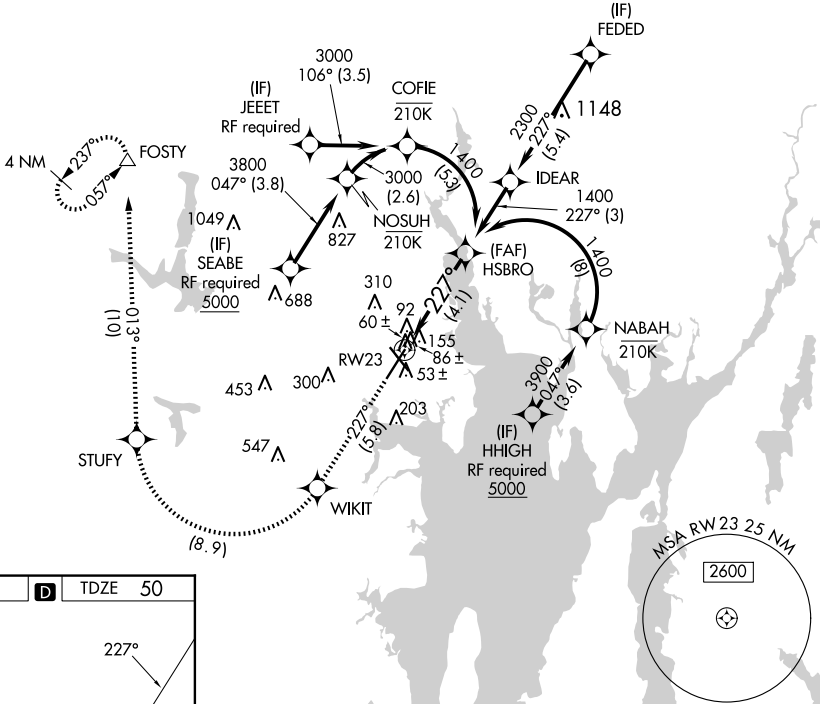
For uncompensated Baro-VNAV systems, procedure NA below -15°C (5°F) or above 48°C (118°F). RF required. For inop MALSR, increase RNP 0.30 all Cats visibility to 1¼. GPS Required.

MALSR

Climb to 2500 on track 227° to WIKIT and right turn to STUFY and on track 013° to FOSTY and hold.

D-ATIS	PROVIDENCE APP CON ★	PROVIDENCE TOWER ★	GND CON	CLNC DEL
124.2	123.675 244.875	120.7 (CTAF) 257.8	121.9 348.6	126.65 348.6

RADAR REQUIRED



2500 WIKIT

STUFY

tr 013° FOSTY

HSBRO

tr 227°

tr 013°

△

1400

VGSI and RNAV glidepath not coincident (VGSI Angle 3.00/TCH 41).

See planview for multiple IF locations.

GP 3.00° TCH 51

CATEGORY	A	B	C	D
RNP 0.30 DA	434/40	384 (400-¾)		

AUTHORIZATION REQUIRED