

WAAS
CH **58023**
W34A

APP CRS
337°

Rwy Idg
TDZE
Apt Elev
6081
50
54

RNAV (GPS) RWY 34

RHODE ISLAND TF GREEN INTL (PVD)

RNP APCH

▼

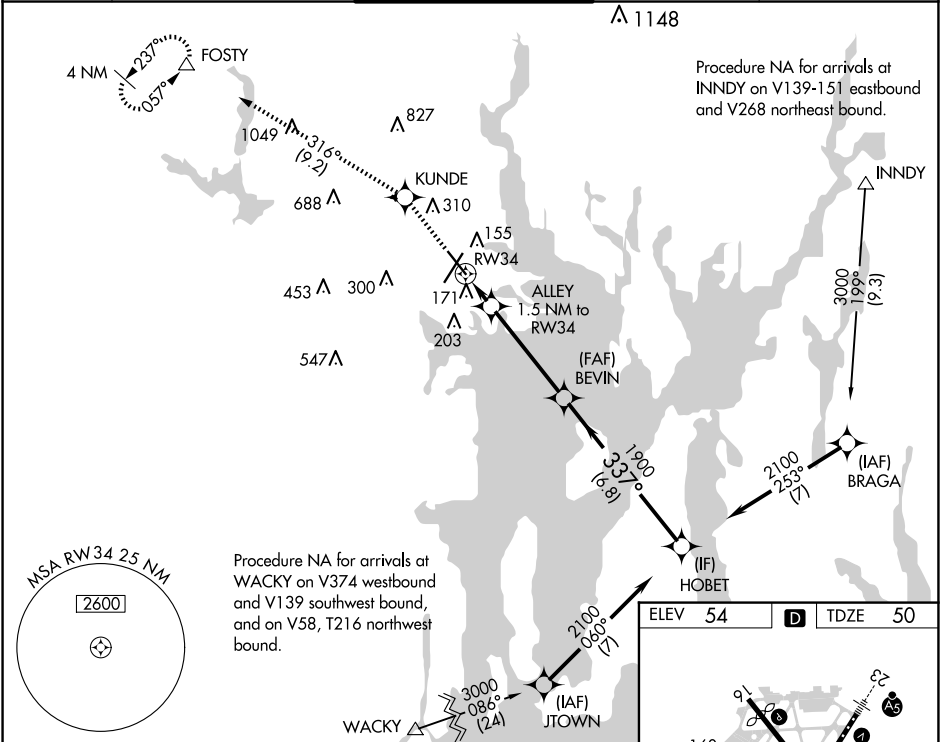
▲

For uncompensated Baro-VNAV systems, LNAV/VNAV NA below -16°C or above 54°C. For inop MALSR, increase LNAV/VNAV all Cats visibility to RVR 5000. For inop MALSR, increase LNAV Cat A/B visibility to RVR 5500, and Cat C/D visibility to RVR 6000. Rwy 34 helicopter visibility reduction below RVR 4000 NA.

MALSR

MISSED APPROACH:
Climb to 2500 direct KUNDE and on track 316° to FOSTY and hold.

D-ATIS 124.2	PROVIDENCE APP CON ★ 123.675 244.875	PROVIDENCE TOWER ★ 120.7 (CTAF) 0 257.8	GND CON 121.9 348.6	CLNC DEL 126.65 348.6
------------------------	--	---	-------------------------------	---------------------------------



2500

KUNDE

tr 316°

FOSTY

*LNAV only.

ALLEY 1.5 NM to RW34

RW34

BEVIN 1900

HOBET 2100

GP 3.00° TCH 53

VGSI and RNAV glidepath not coincident (VGSI Angle 3.00/TCH 60.)

337°

1900

2100

560

1.5 NM

4.2 NM

6.8 NM

CATEGORY	A	B	C	D
LPV DA		330/40	280 (300-¾)	
LNAV/VNAV DA		349/40	299 (300-¾)	
LNAV MDA		440/40	390 (400-¾)	
CIRCLING	560-1 506 (600-1)	640-1 586 (600-1)	640-1½ 586 (600-1½)	860-2½ 806 (900-2½)

TDZ/CL Rwy 5 0

REIL Rwy 16 0

HIRL Rws 5-23 and 16-34 0