

LOC/DME I-ARJ	APP CRS	Rwy Idg	8700
109.3	227°	TDZE	50
Chan 30		Apt Elev	54

ILS RWY 23 (SA CAT I & II)

RHODE ISLAND TF GREEN INTL (PVD)

DME or RADAR required for procedure entry.

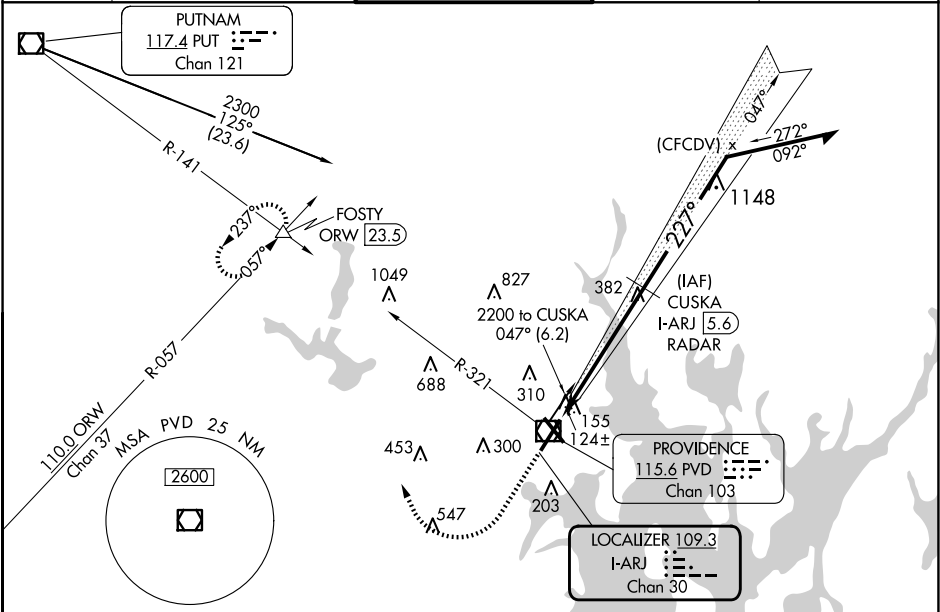
SA Cat I: Requires specific OPSPEC, MSPEC, or LOA approval and use of HUD to DH.
SA CAT II: Reduced Lighting: Requires specific OPSPEC, MSPEC, or LOA approval and use of Autoland or HUD to touchdown.
Procedure NA when tower closed.

MALSR

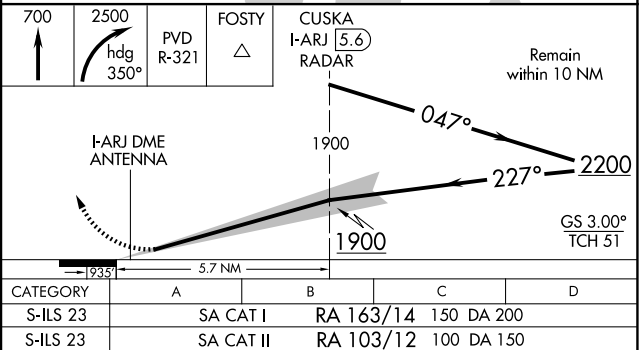
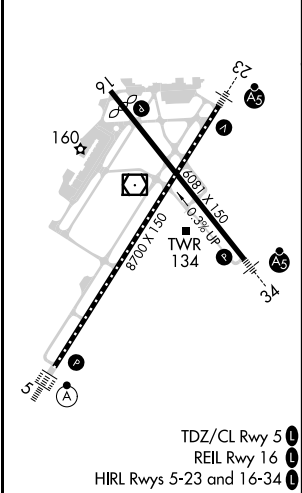
AS

MISSED APPROACH: Climb to 700 then climbing right turn to 2500 on heading 350° and PVD VOR/DME R-321 to FOSTY INT/ ORW 23.5 DME and hold.

D-ATIS	PROVIDENCE APP CON *	PROVIDENCE TOWER *	GND CON	CLNC DEL
124.2	123.675 244.875	120.7 (CTAF) 257.8	121.9 348.6	126.65 348.6



ELEV 54	D	TDZE 50
---------	---	---------



SA CATEGORY I & II ILS - SPECIAL AIRCREW & AIRCRAFT CERTIFICATION REQUIRED				
CATEGORY	A	B	C	D
S-ILS 23	SA CAT I	RA 163/14	150	DA 200
S-ILS 23	SA CAT II	RA 103/12	100	DA 150