

WAAS CH <b>90212</b> <b>W28A</b>	APP CRS <b>273°</b>	Rwy Idg TDZE <b>473</b> Apt Elev <b>534</b>
--	------------------------	---

RNAV (GPS) RWY 28

PRESQUE ISLE INTL (PQI)

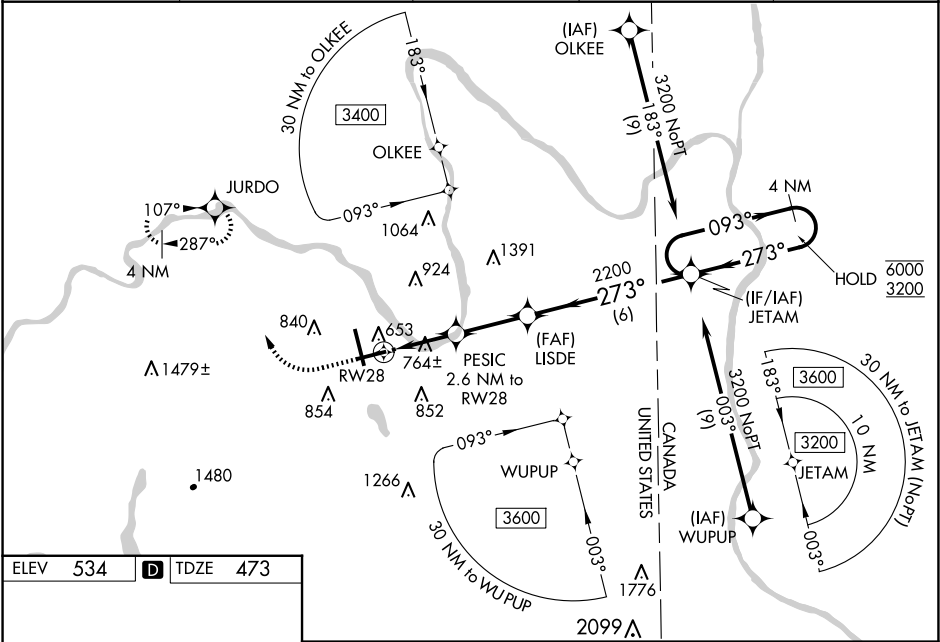
RNP APCH - GPS.

▼  
▲  
⊞ -36°C

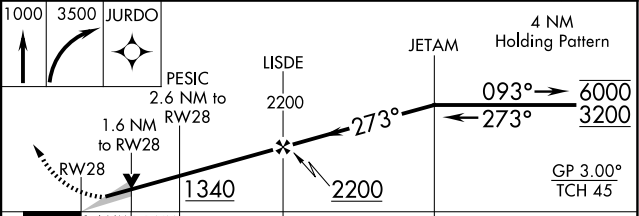
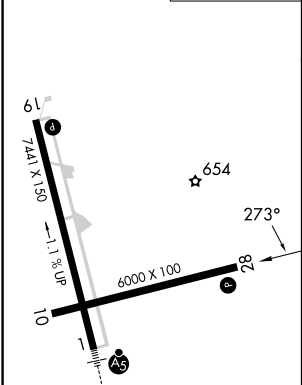
For uncompensated Baro-VNAV systems, LNAV/VNAV NA below -16°C or above 54°C.  
Circling Rwy 10 NA at night. Rwy 28 helicopter visibility reduction below ¾ SM NA.  
When local altimeter setting not received, use HUL altimeter setting: increase LPV DA to 855 feet and all visibilities ¼ SM; increase LNAV/VNAV DA to 1175 feet and all visibilities ¼ SM; increase all MDAs 100 feet and LNAV visibility Cats C and D ¼ SM, and Circling visibility Cat C ½ SM and Cat D ¼ SM. Baro-VNAV and VDP NA when using HUL altimeter setting.

MISSED APPROACH: Climb to 1000 then climbing right turn to 3500 direct JURDO and hold. Continue climb-in-hold to 3500.

AWOS-3PT <b>118.025</b>	BOSTON CENTER <b>124.75 239.05</b>	CLNC DEL <b>121.6</b>	UNICOM <b>122.8 (CTAF)</b>	<b>122.6</b>
----------------------------	---------------------------------------	--------------------------	-------------------------------	--------------



ELEV 534	TDZE 473
----------	----------



CATEGORY	A	B	C	D
LPV DA	765-1 292 (300-1)			
LNAV/VNAV DA	1085-1¾ 612 (600-1¾)			
LNAV MDA	1020-1 547 (500-1)	1020-1½ 547 (500-1½)		
CIRCLING	1140-1 606 (700-1)	1160-1 626 (700-1)	1320-2¼ 786 (800-2¼)	1380-2¾ 846 (900-2¾)

NE-1, 10 JUL 2025 to 07 AUG 2025

NE-1, 10 JUL 2025 to 07 AUG 2025