

WAAS CH 40004 W10A	APP CRS 103°	Rwy Idg 11000 TDZE 24 Apt Elev 31
--	------------------------	--

RNAV (GPS) Y RWY 10R
PORTLAND INTL (PDX)

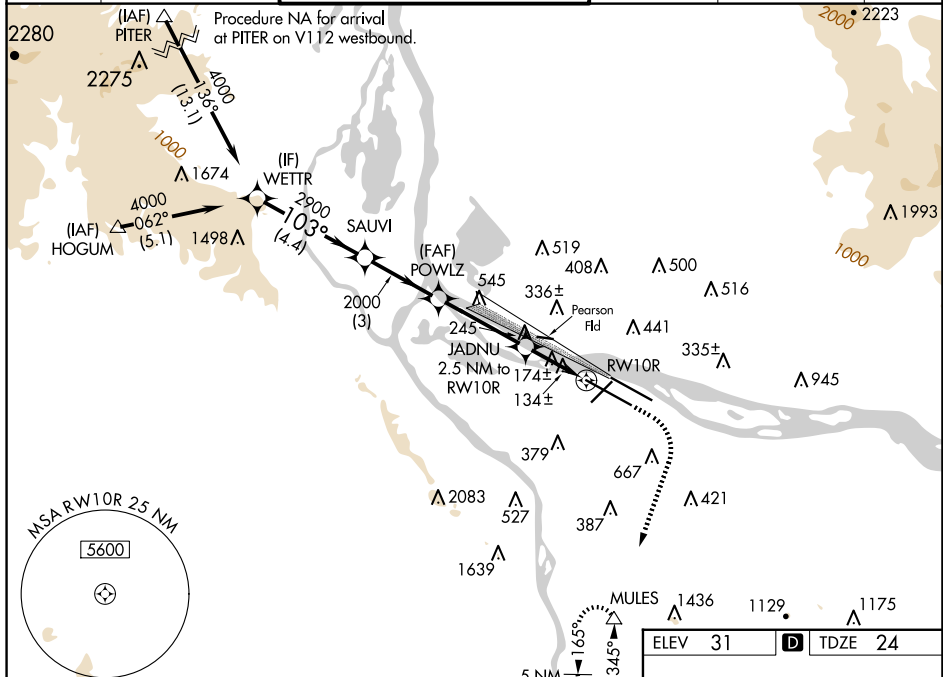
T For uncompensated Baro-VNAV systems, LNAV/VNAV NA below -15°C (5°F) or above 54°C (130°F). DME/DME RNP-0.3 NA. Simultaneous approach authorized with Rwy 10L. Use of FD or AP providing RNAV track guidance required during simultaneous operations. LNAV procedure NA during simultaneous operations.

ALSF-2



MISSED APPROACH: Climb to 440 then climbing right turn to 5000 direct MULES and hold.

D-ATIS 128.35 269.9	PORTLAND APP CON 124.35 299.2	PORTLAND TOWER Rwy 10L-28R Rwy 3-21, 10R-28L 118.7 257.8 123.775 251.125		GND CON 121.9 348.6	CLNC DEL 120.125 318.1	CPDLC
---------------------------	----------------------------------	--	--	------------------------	---------------------------	-------



<p>WGSI and RNAV glidepath not coincident (WGSI Angle 3.00/TCH 71).</p>					
CATEGORY	A		B	C	D
LPV DA	224/18		200 (200-½)		
RNAV/ VNAV DA	329/24		305 (300-½)		
RNAV MDA	440/24		416 (500-½)	440/40 416 (500-¾)	
C CIRCLING	720-1 689 (700-1)	760-1 729 (800-1)	1060-3 1029 (1100-3)		

