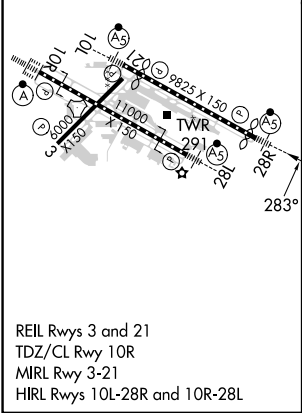
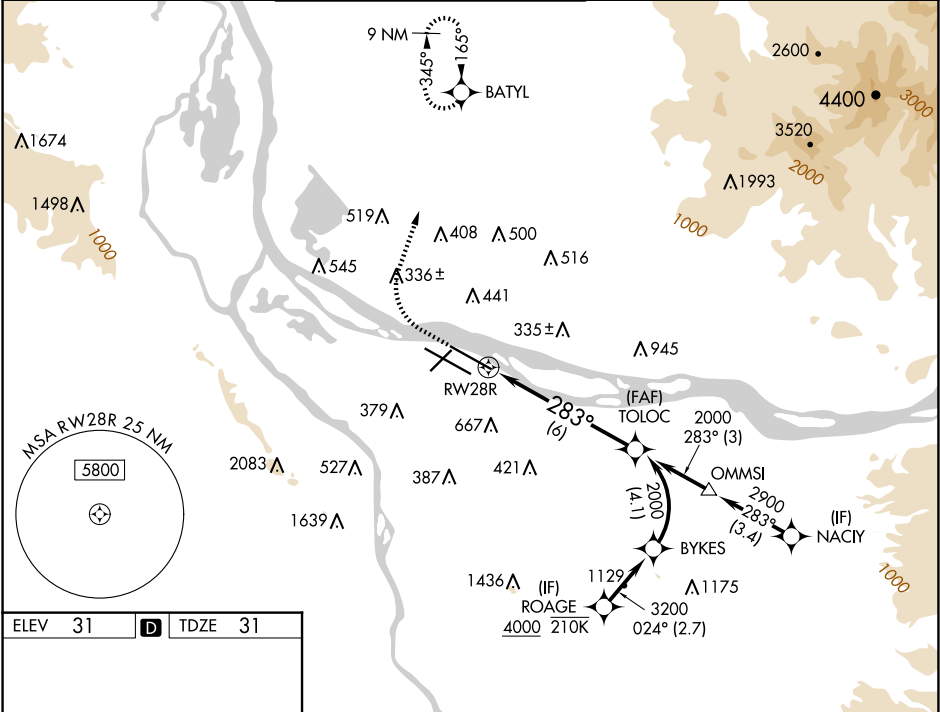


APP CRS	Rwy Idg	9290
283°	TDZE	31
	Apt Elev	31

RNAV (RNP) Z RWY 28R  
PORTLAND INTL (PDX)

RNP AR APCH - GPS. Authorization required. From BYKES: RF	MALSR	MISSED APPROACH: Climb to 600 then climbing right turn to 4400 direct BATYL and hold, continue climb-in-hold to 4400.
For uncompensated Baro-VNAV systems, procedure NA below -5°C or above 54°C. Simultaneous approach authorized. For inop ALS increase RNP 0.10 all Cats visibility to RVR 4500, increase RNP 0.20 all Cats visibility to RVR 5500, and increase RNP 0.30 all Cats visibility to RVR 6000.		

D-ATIS 128.35 269.9	PORTLAND APP CON 124.35 299.2	PORTLAND TOWER Rwy 10L-28R 118.7 257.8	Rwys 3-21, 10R-28L 123.775 251.125	GND CON 121.9 348.6	CLNC DEL 120.125 318.1	CPDLC
---------------------------	----------------------------------	--	---------------------------------------	------------------------	---------------------------	-------



600	4400	BATYL	VGSI and RNAV glidepath not coincident (VGSI Angle 3.00/TCH 70).	TOLOC	2000
RWY 28R				283°	2000
See planview for multiple IF locations.				GP 3.00° TCH 54	
6 NM					
CATEGORY	A	B	C	D	
RNP 0.10 DA	322/24 291 (300-1/2)				
RNP 0.20 DA	400/35 369 (400-5/8)				
RNP 0.30 DA	451/40 420 (500-3/4)				
AUTHORIZATION REQUIRED					

NW-1, 10 JUL 2025 to 07 AUG 2025

NW-1, 10 JUL 2025 to 07 AUG 2025