
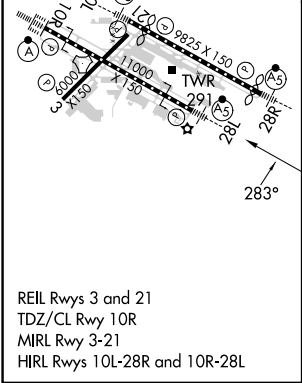
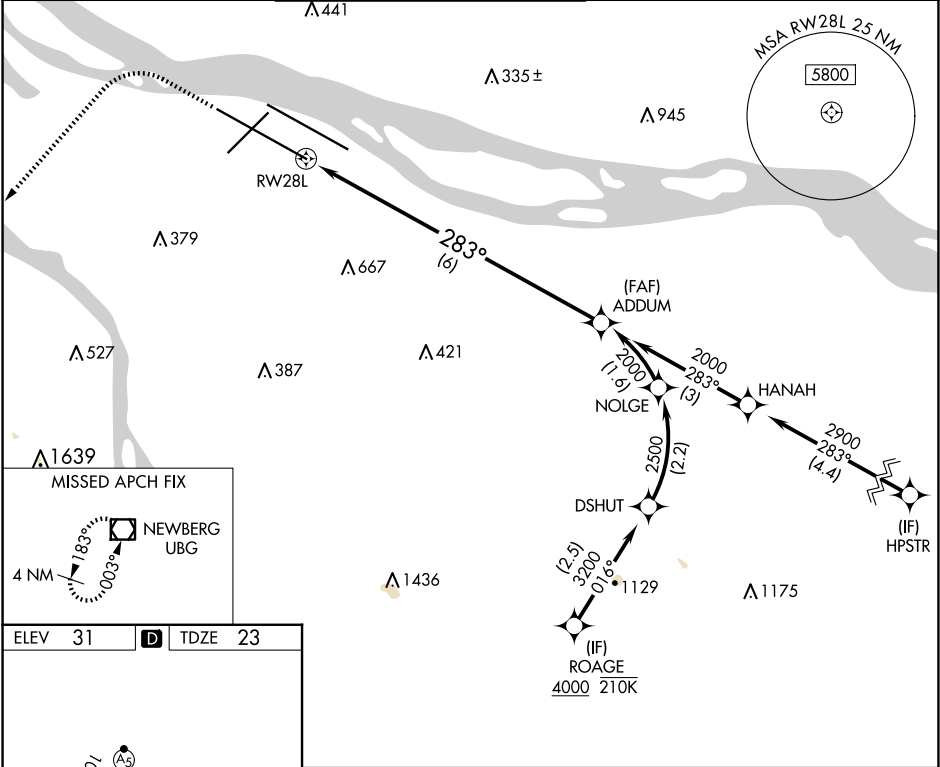


APP CRS	Rwy Idg	11000
283°	TDZE	23
	Apt Elev	31

RNAV (RNP) Z RWY 28L
PORTLAND INTL (PDX)

RNP AR APCH - GPS. Authorization required. From DSHUT: RF.			<div>MALSR</div> <div></div>	MISSED APPROACH: Climb to 2100 then climbing left turn to 4000 direct UBG VOR/DME and hold.		
<div><div><div></div></div><div>For uncompensated Baro-VNAV systems, procedure NA below -5°C or above 54°C. Simultaneous approach authorized.</div></div>						
<div>D-ATIS</div> <div>128.35</div> <div>269.9</div>	<div>PORTLAND APP CON</div> <div>124.35 299.2</div>	<div>PORTLAND TOWER</div> <div>Rwy 10L-28R Rwys 3-21, 10R-28L</div> <div>118.7 257.8 123.775 251.125</div>	<div>GND CON</div> <div>121.9 348.6</div>	<div>CLNC DEL</div> <div>120.125 318.1</div>	<div>CPDLC</div>	



2100	4000	UBG	VGSI and RNAV glidepath not coincident (VGSI Angle 3.00/TCH 72).		ADDUM
					2000
See planview for multiple IF locations.					
CATEGORY	A	B	C	D	
RNP 0.30 DA	399/60 376 (400-1¼)				
AUTHORIZATION REQUIRED					

NW-1, 10 JUL 2025 to 07 AUG 2025

NW-1, 10 JUL 2025 to 07 AUG 2025