

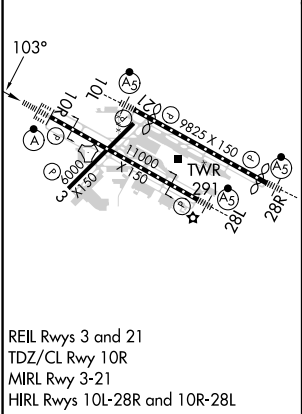
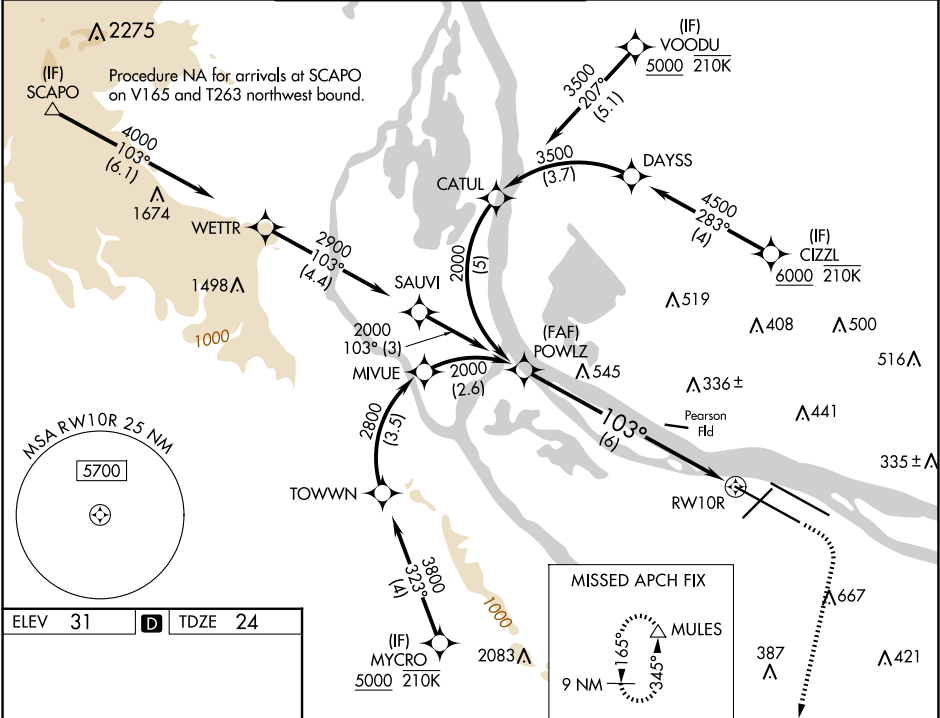
APP CRS	Rwy Idg	11000
103°	TDZE	24
	Apt Elev	31

# RNAV (RNP) Z RWY 10R

PORTLAND INTL (PDX)

RNP AR APCH - GPS. Authorization required. From DAYSS, CATUL, or TOWNN: RF.	ALSIF-2	MISSED APPROACH: Climb to 440 then climbing right turn to 5000 direct MULES and hold, continue climb-in-hold to 5000.
▼ For uncompensated Baro-VNAV systems, procedure NA below -5°C or above 54°C. Simultaneous approach authorized. For inop ALS, increase RNP 0.18 all Cats visibility to RVR 4500, increase RNP 0.30 all Cats visibility to RVR 5500.		

D-ATIS	PORTLAND APP CON	PORTLAND TOWER	GND CON	CLNC DEL	CPDLC
128.35	124.35 299.2	Rwys 10L-28R 118.7 257.8	121.9 348.6	120.125 318.1	
269.9		Rwys 3-21, 10R-28L 123.775 251.125			



VGSI and RNAV glidepath not coincident (VGSI Angle 3.00/TCH 71).					440 ↑	5000 ↗	MULES △
POWLZ 2000					See planview for multiple IF locations.		
2000 ↗					103°		
GP 3.00° TCH 53					RW10R		
6 NM							
CATEGORY	A	B	C	D			
RNP 0.18 DA	324/24		300 (300-½)				
RNP 0.30 DA	397/35		373 (400-¾)				
AUTHORIZATION REQUIRED							

NW-1, 10 JUL 2025 to 07 AUG 2025

NW-1, 10 JUL 2025 to 07 AUG 2025