

APP CRS 283°	Rwy Idg	9290
	TDZE	31
	Apt Elev	31

RNAV (RNP) Y RWY 28R

PORTLAND INTL (PDX)

▼

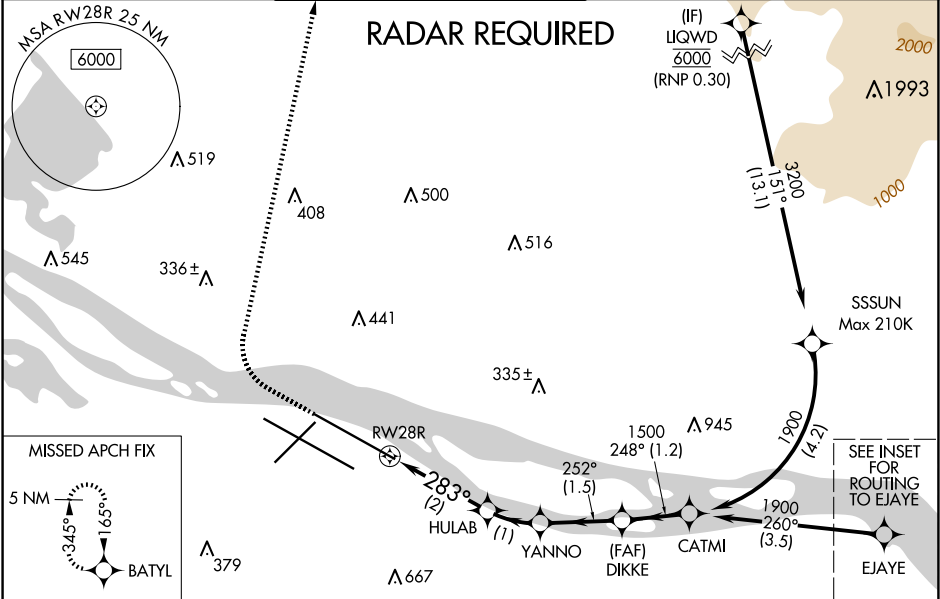
For uncompensated Baro-VNAV systems, procedure NA below -7°C (20°F) or above 54°C (130°F). For inop MALSR, increase RNP 0.20 all Cats visibility to 1¼ mile, and increase RNP 0.30 all Cats visibility to 1½ mile. RF required. GPS required. Use of FD or AP providing RNAV track guidance required during simultaneous operations. Simultaneous approach authorized with Rwy 28L.

MALSR

AS

MISSED APPROACH:
Climb to 600 then climbing right turn to 4400 direct BATYL and hold, continue climb-in-hold to 4400.

D-ATIS 128.35 269.9	PORTLAND APP CON 124.35 299.2	PORTLAND TOWER Rwy 10L-28R 118.7 257.8 Rwys 3-21, 10R-28L 123.775 251.125	GND CON 121.9 348.6	CLNC DEL 120.125 318.1	CPDLC
---	---	---	-------------------------------	----------------------------------	-------



ELEV 31

D

TDZE 31

ROUTING TO EJAYE (not to scale)

3000 259° (8)

5200 258° (5.5)

(IF) SHAFR 6700 Max 210K (RNP 0.30)

600 4400 BATYL

VGSI and RNAV glidepath not coincident (VGSI Angle 3.00/TCH 70).

See planview for multiple IF locations.

283°

252°

248°

1900

1500

1034

722

286°

283°

2 NM

1 NM

1.5 NM

1.2 NM

GP 3.00° TCH 54

CATEGORY	A	B	C	D
RNP 0.20 DA		403/40	372 (400-¾)	
RNP 0.30 DA		455/50	424 (500-1)	

AUTHORIZATION REQUIRED

NW-1, 10 JUL 2025 to 07 AUG 2025

NW-1, 10 JUL 2025 to 07 AUG 2025