

|         |          |       |
|---------|----------|-------|
| APP CRS | Rwy Idg  | 11000 |
| 283°    | TDZE     | 23    |
|         | Apt Elev | 31    |

RNAV (RNP) Y RWY 28L

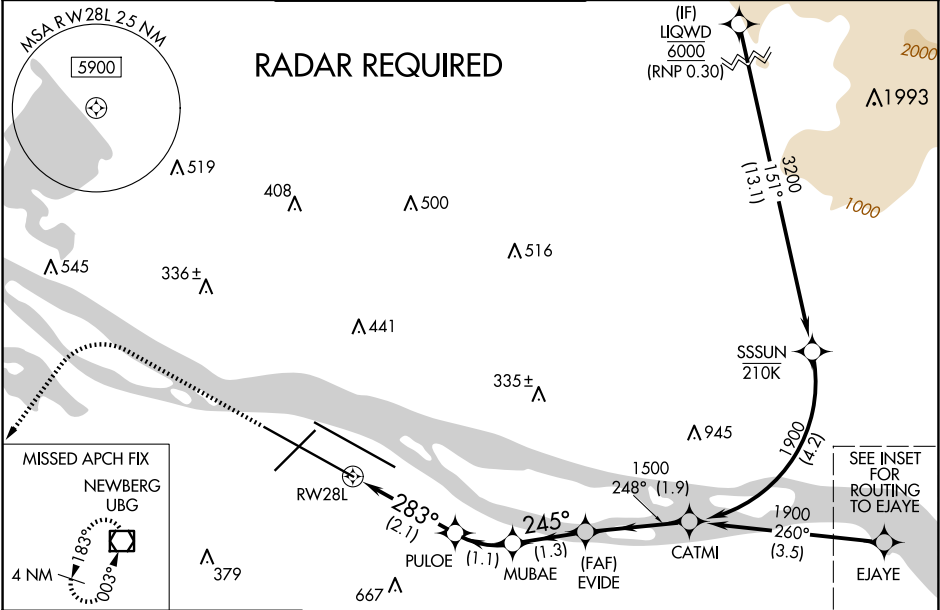
PORTLAND INTL (PDX)

▼ For uncompensated Baro-VNAV systems, procedure NA below -7°C (20°F) or above 54°C (130°F). For inop MALSR, increase RNP 0.23 all Cats visibility to RVR 5600 and increase RNP 0.30 all Cats visibility to 1½ mile. Simultaneous approach authorized with Rwy 28R. RF required. Use of FD or AP providing RNAV track guidance required during simultaneous operations.

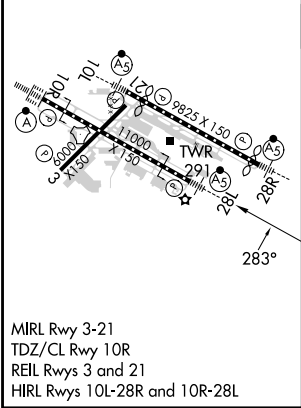
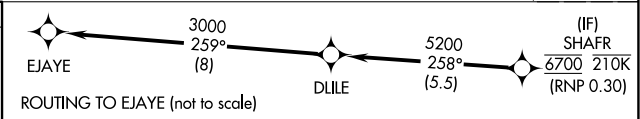
MALSR

MISSED APPROACH: Climb to 2100 then climbing left turn to 4000 direct UBG VOR/DME and hold.

|        |                  |                                |             |               |       |
|--------|------------------|--------------------------------|-------------|---------------|-------|
| D-ATIS | PORTLAND APP CON | PORTLAND TOWER                 | GND CON     | CLNC DEL      | CPDLC |
| 128.35 | 124.35 299.2     | Rwy 10L-28R Rlys 3-21, 10R-28L | 121.9 348.6 | 120.125 318.1 |       |
| 269.9  |                  | 118.7 257.8 123.775 251.125    |             |               |       |



|         |   |         |
|---------|---|---------|
| ELEV 31 | D | TDZE 23 |
|---------|---|---------|



|   |           |         |   |       |       |
|---|-----------|---------|---|-------|-------|
| 2100<br>↑                               | 4000<br>↙ | UBG<br> | VGSI and RNAV glidepath not coincident<br>(VGSI Angle 3.00/TCH 72). |       |       |
| See planview for multiple IF locations. |           |         | MUBAE   | EVIDE | CATMI |
|   |           |         |   |       |       |
| CATEGORY                                | A         | B       | C   | D     |       |
| RNP 0.23 DA                             | 370/33    |         | 347 (400-5%)  |       |       |
| RNP 0.30 DA                             | 476/53    |         | 453 (500-1)   |       |       |
| AUTHORIZATION REQUIRED                  |           |         |   |       |       |

NW-1, 10 JUL 2025 to 07 AUG 2025

NW-1, 10 JUL 2025 to 07 AUG 2025