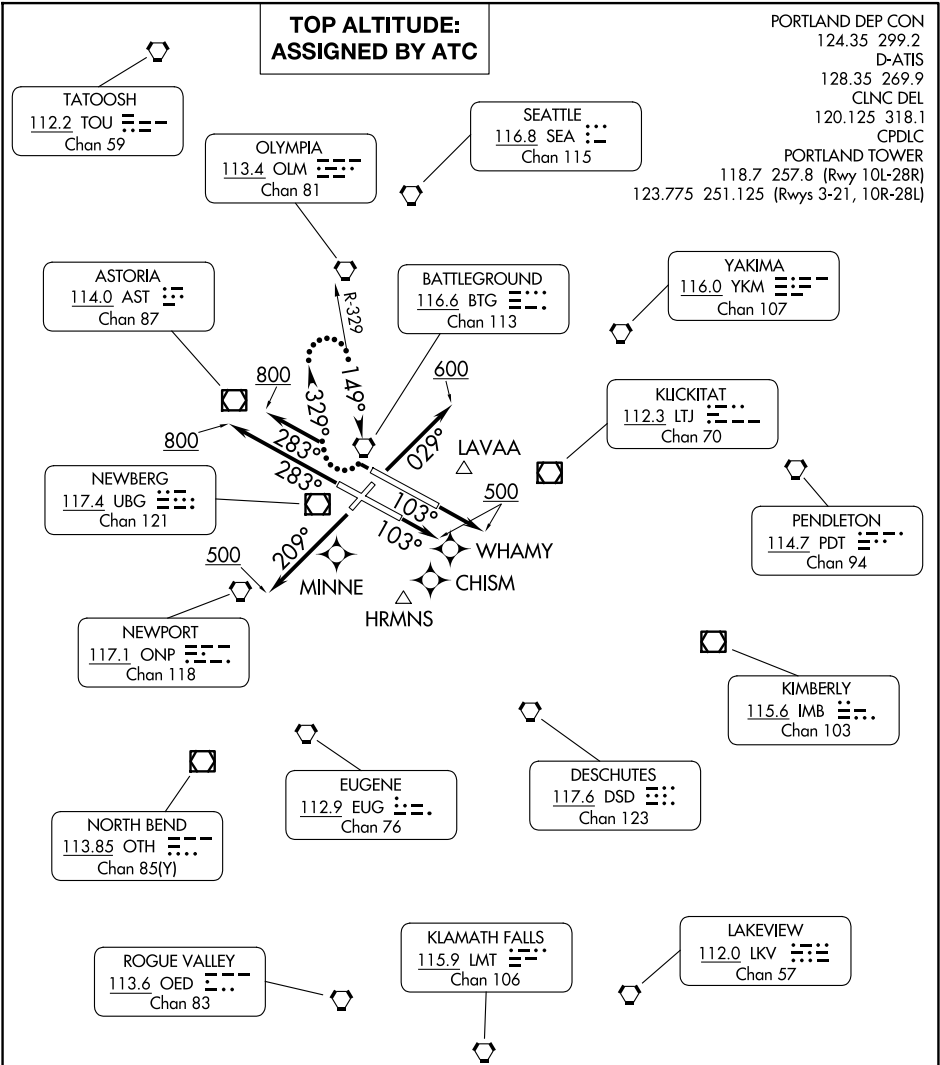


PORTLAND TWO DEPARTURE

AL-330 (FAA)

PORTLAND INTL (PDX)
PORTLAND, OREGON



NW-1, 10 JUL 2025 to 07 AUG 2025

NW-1, 10 JUL 2025 to 07 AUG 2025

TAKEOFF MINIMUMS

- Rwy 3: Standard with minimum climb of 375' per NM to 5300.
- Rwy 10L: Standard with minimum climb of 350' per NM to 5900.
- Rwy 10R: Standard with minimum climb of 400' per NM to 5000.
- Rwy 21: Standard with minimum climb of 430' per NM to 4000.
- Rwy 28L: Standard with minimum climb of 375' per NM to 4500.
- Rwy 28R: Standard with minimum climb of 340' per NM to 5400.

NOTE: RADAR required.

NOTE: Chart not to scale.

(CONTINUED ON FOLLOWING PAGE)

PORTLAND TWO DEPARTURE