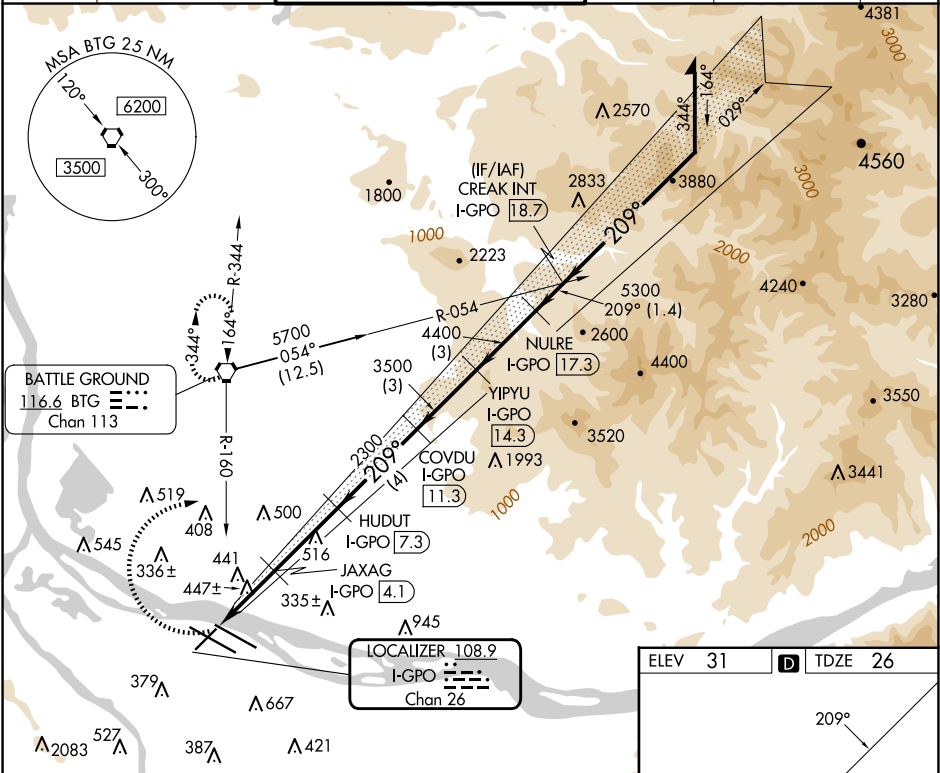


LOC/DME I-GPO	APP CRS	Rwy Idg	6000
108.9	209°	TDZE	26
Chan 26		Apt Elev	31

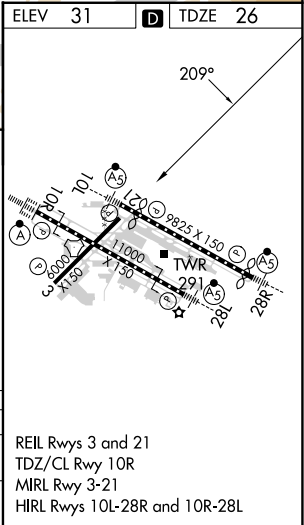
LOC/DME RWY 21  
PORTLAND INTL (PDX)

<p><b>▼</b> Helicopter visibility reduction below ¾ SM NA.</p>	<p>MISSED APPROACH: Climbing right turn to 4200 on BTG VORTAC R-160 to BTG VORTAC and hold, continue climb-in-hold to 4200.</p>
--	---

D-ATIS 128.35 269.9	PORTLAND APP CON 124.35 299.2	PORTLAND TOWER Rwy 10L-28R Rlys 3-21, 10R-28L 118.7 257.8 123.775 251.125	GND CON 121.9 348.6	CLNC DEL 120.125 318.1	CPDLC
---------------------------	----------------------------------	---	------------------------	---------------------------	-------



4200 BTG R-160	VGSI and descent angles not coincident (VGSI Angle 3.60/TCH 32).	CREAK INT I-GPO 18.7	Remain within 10 NM
JAXAG I-GPO 4.1	HUDUT I-GPO 7.3	COVDU I-GPO 11.3	YIPYU I-GPO 14.3
I-GPO 1.2	I-GPO 2.8	I-GPO 1.7	I-GPO 1.3
1120	2300	3500	4400
1.7	1.3	3.2 NM	4 NM
3.2 NM	4 NM	3 NM	3 NM
1.4 NM			
CATEGORY	A	B	C
S-21	700-1	674 (700-1)	700-1 674 (700-1)
CIRCLING	720-1 689 (700-1)	760-1 729 (800-1)	1060-3 1029 (1100-3)



NW-1, 10 JUL 2025 to 07 AUG 2025

NW-1, 10 JUL 2025 to 07 AUG 2025