

ILS or LOC RWY 10L
PORTLAND INTL (PDX)

MISSED APPROACH: Climb to 800 then climbing left turn to 4200 on BTG VORTAC R-160 to BTG VORTAC and hold, continue climb-in-hold to 4200.

2280

2275

283°

1674

1498

1000

(IF) BUXOM INT I-VDG 12.4 RADAR

2300

103° (3)

2000

TRAYL INT I-VDG 8.7 RADAR

379

2083

527

1639

BLAZR INT I-VDG 5.7 RADAR

JALAG INT I-VDG 2.8 RADAR

545

298

336±

Pearson Fld

157

408

519

R-234

R-218

R-200

R-180

R-344

344°

164°

091

500

516

335±

CFBGC

441

667

421

1436

1129

117.4 UBG Chan 121

AASEN UBG 32.5

ALT MISSED APCH FIX

BATTLE GROUND 116.6 BTG Chan 113

LOCALIZER 111.3 I-VDG Chan 50

MSA BTG 25 NM

6200

3500

120°

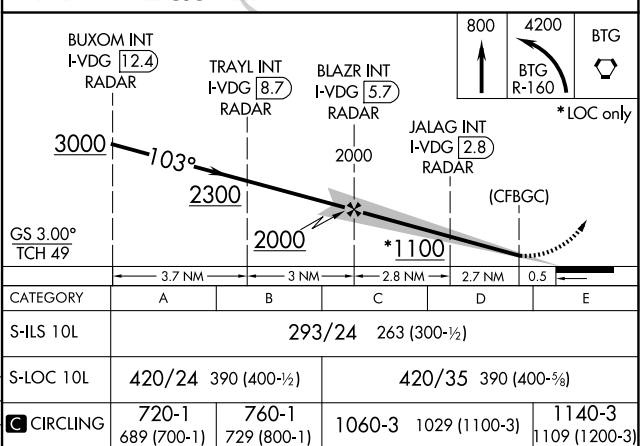
300°

1993

1000

945

RADAR REQUIRED



FAF to MAP 5.6 NM					
Knots	60	90	120	150	180
Min:Sec	5:36	3:44	2:48	2:14	1:52

NW-1, 10 JUL 2025 to 07 AUG 2025