

HRMNS SIX DEPARTURE (RNAV)

AL-330 (FAA)

PORTLAND INTL (PDX)

PORTLAND, OREGON

RNAV 1 - DME/DME/IRU or GPS.

RADAR required for non-GPS equipped aircraft.

**TOP ALTITUDE:
ASSIGNED BY ATC**

PORTLAND DEP CON

118.1 284.6

D-ATIS

128.35 269.9

CLNC DEL

120,125 318,1

CPDLC

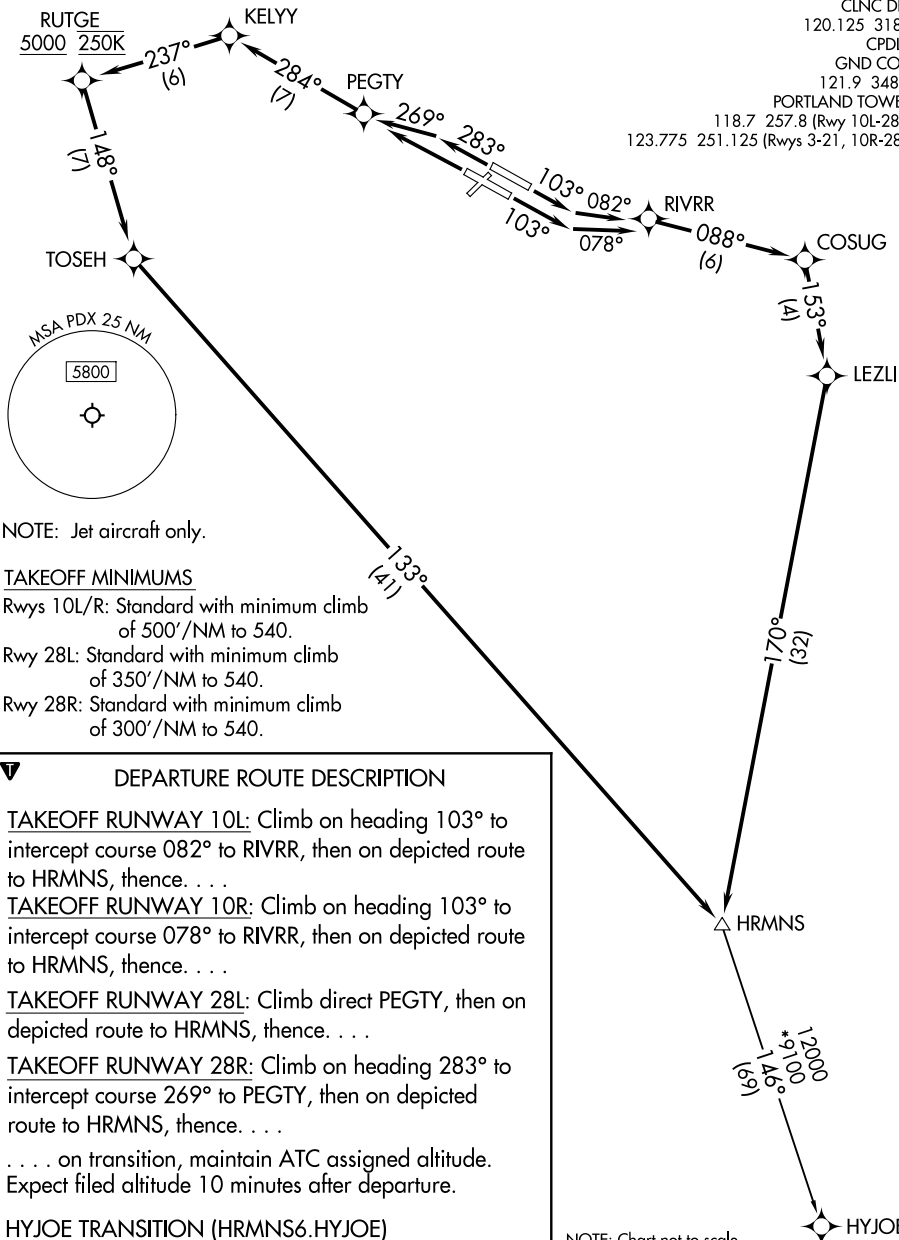
GND CON

121.9 348.6

PORTLAND TOWER

118.7 257.8 (Rwy 10L-28R)

123.775 251.125 (Rwys 3-21, 10R-28L)



NOTE: Chart not to scale.

HRMNS SIX DEPARTURE (RNAV)

(HRMNS6.HRMNS) 31OCT24

PORTLAND, OREGON

PORTLAND INTL (PDX)

NW-1, 10 JUL 2025 to 07 AUG 2025