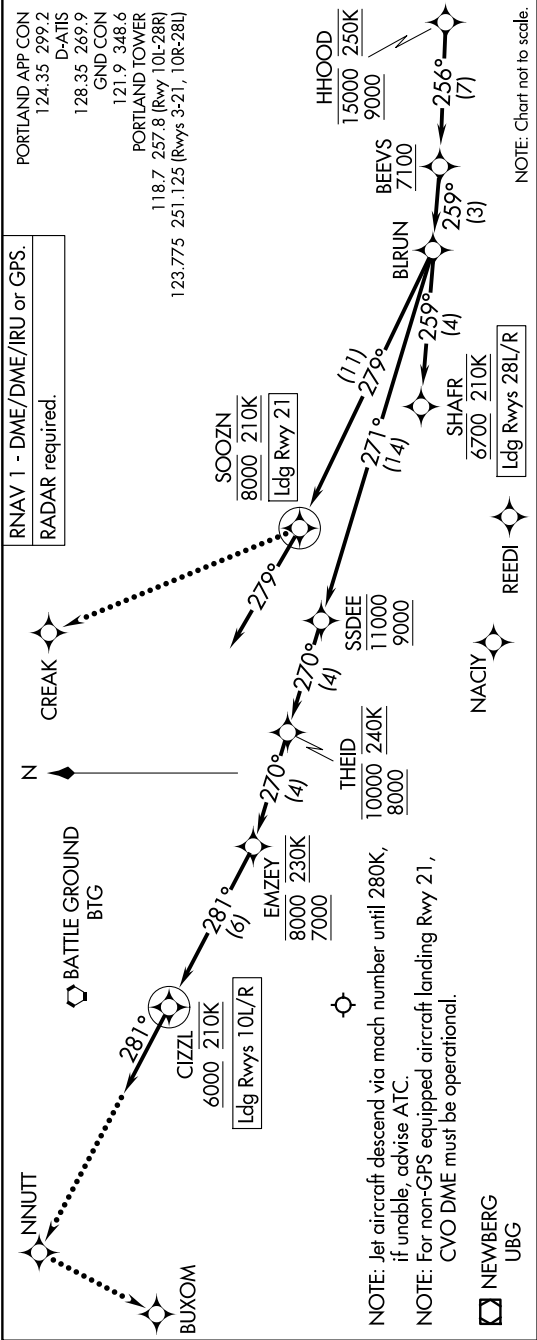


NW-1, 10 JUL 2025 to 07 AUG 2025

(HHOOD.HHOOD5) 24305  
HHOOD FIVE ARRIVAL (RNAV) Arrival Routes

AL-330 (FAA)

PORTLAND INTL (PDX)  
PORTLAND, OREGON



ARRIVAL ROUTE DESCRIPTION

From HHOOD on track 256° to cross BEEVS at or above 7100, then on track 259° to BURUN.  
LANDING RUNWAYS 10L/R: From BURUN on track 271° to cross SSDEE between 9000 and 11000, then on track 270° to cross THEID between 8000 and 10000 and at 240K, then on track 270° to cross EMZEY between 7000 and 8000 and at 230K, then on track 281° to cross CIZZL at or above 6000 and at 210K, then on track 281°. Expect RADAR vectors to final approach course.  
LANDING RUNWAY 21: From BURUN on track 279° to cross SOOZN at 8000 and at 210K, then on track 279°. Expect RADAR vectors to final approach course.  
LANDING RUNWAYS 28L/R: From BURUN on track 259° to cross SHAHR at 6700 and at 210K. Expect RNAV or ILS Rwy 28L/R approach.  
LOST COMMUNICATIONS  
Maintain Rwy transition terminus altitude until established on approach procedure.  
RUNWAYS 10L/R: After CIZZL, proceed to NNUUTT, then left turn to BUXOM, conduct the ILS or LOC Rwy 10L approach.  
RUNWAY 21: After SOOZN turn right to CREAK and proceed on the LOC/DME Rwy 21 approach.  
RUNWAYS 28L/R: After SHAHR proceed on the ILS or LOC Rwy 28R approach.

NW-1, 10 JUL 2025 to 07 AUG 2025

(HHOOD.HHOOD5) 31OCT24  
HHOOD FIVE ARRIVAL (RNAV) Arrival Routes

PORTLAND, OREGON  
PORTLAND INTL (PDX)