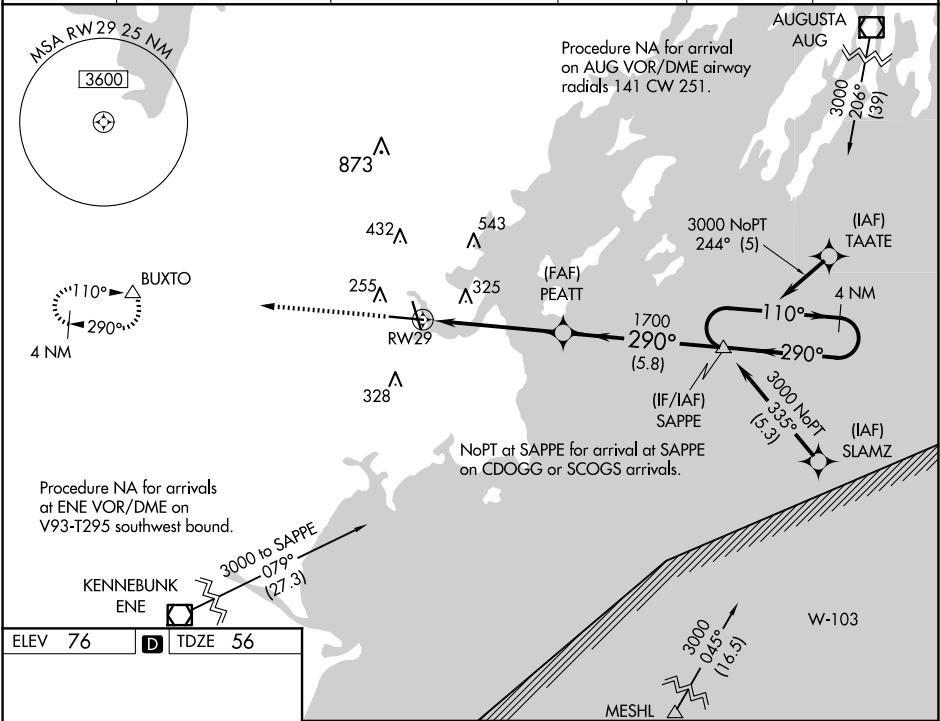


WAAS CH 65626 W29A	APP CRS 290°	Rwy Idg 7200 TDZE 56 Apt Elev 76
--	------------------------	---

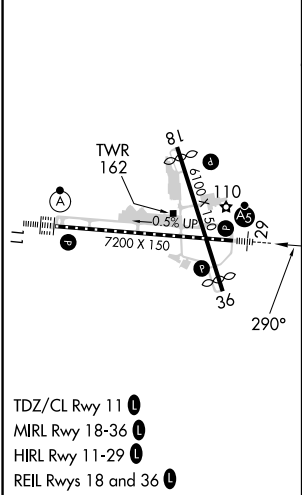
RNAV (GPS) RWY 29
PORTLAND INTL JETPORT (PWM)

RNP APCH	For uncompensated Baro-VNAV systems, LNAV/VNAV NA below -18°C or above 54°C. For inop MALS, increase LNAV/VNAV all Cats visibility to 1½ mile, increase LNAV Cat C/D visibility to 1¾ mile. **RVR 1800 authorized with use of FD or AP or HUD to DA.	MALS AS	MISSED APPROACH: Climb to 3000 direct BUXTO and hold, continue climb-in-hold to 3000.
----------	---	------------	---

ATIS 119.05	PORTLAND APP CON ★ 119.75 269.35	PORTLAND TOWER ★ 120.9 0 (CTAF) 257.8	GND CON 121.9	CLNC DEL 121.9	UNICOM 122.95
-----------------------	--	---	-------------------------	--------------------------	-------------------------



ELEV 76	D	TDZE 56
----------------	----------	----------------



NE-1, 10 JUL 2025 to 07 AUG 2025

NE-1, 10 JUL 2025 to 07 AUG 2025