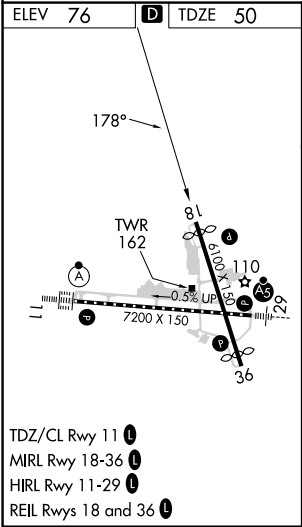
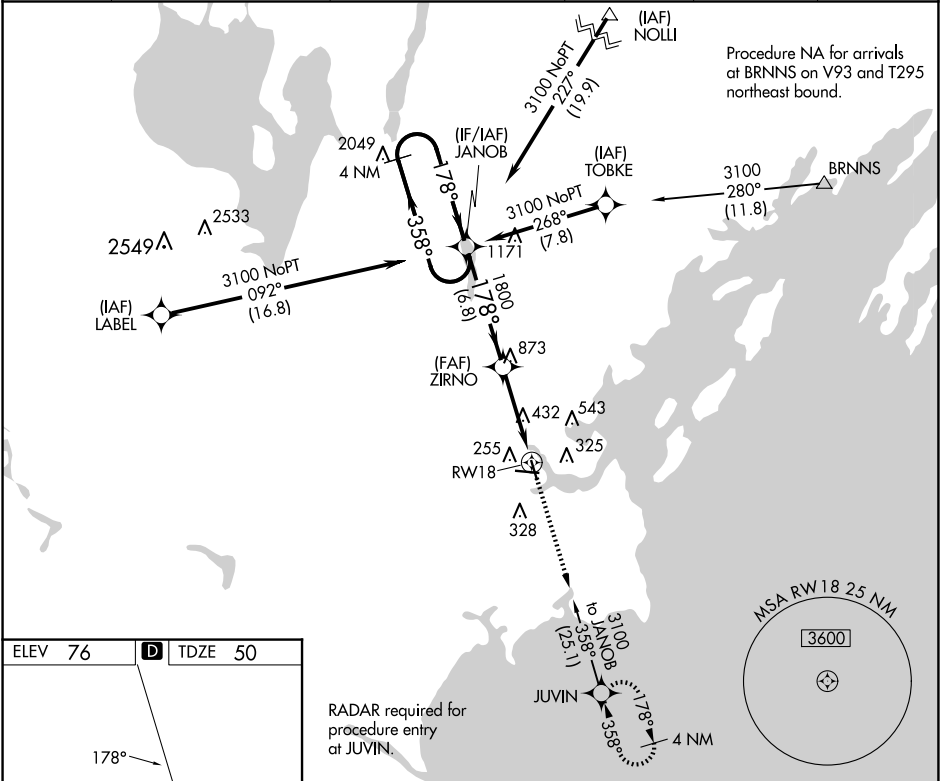


WAAS CH <b>77925</b> <b>W18A</b>	APP CRS <b>178°</b>	Rwy Idg TDZE Apt Elev	<b>5150</b> <b>50</b> <b>76</b>
--	------------------------	-----------------------------	---------------------------------------

**RNAV (GPS) RWY 18**  
PORTLAND INTL JETPORT (PWM)

RNP APCH.	MISSED APPROACH: Climb to 3100 direct JUVIN and hold, continue climb-in-hold to 3100.
▼ For uncompensated Baro-VNAV systems, LNAV/VNAV NA below -19°C (-2°F) or above 54°C (130°F). Rwy 18 helicopter visibility reduction below ¾ SM NA.	

ATIS <b>119.05</b>	PORTLAND APP CON ★ <b>119.75 269.35</b>	PORTLAND TOWER ★ <b>120.9 0 (CTAF) 257.8</b>	GND CON <b>121.9</b>	CLNC DEL <b>121.9</b>	UNICOM <b>122.95</b>
-----------------------	--	---	-------------------------	--------------------------	-------------------------



4 NM Holding Pattern		JANOB	ZIRNO	JUVIN
3100		358°	178°	3100
GP 3.00° TCH 50			1800	
		6.8 NM	3.4 NM	2 NM
CATEGORY	A	B	C	D
LPV DA	300-¾		250 (300-¾)	
LNAV/VNAV DA	477-1⅓		427 (500-1⅓)	
LNAV MDA	740-1 690 (700-1)		740-2 690 (700-2)	
CIRCLING	740-1 664 (700-1)		740-2 860-2½	
			664 (700-2) 784 (800-2½)	

NE-1, 10 JUL 2025 to 07 AUG 2025

NE-1, 10 JUL 2025 to 07 AUG 2025