

LOC/DME I-GCS	APP CRS	Rwy Idg	7200
109.9	290°	TDZE	56
Chan 36		Apt Elev	76

ILS or LOC RWY 29

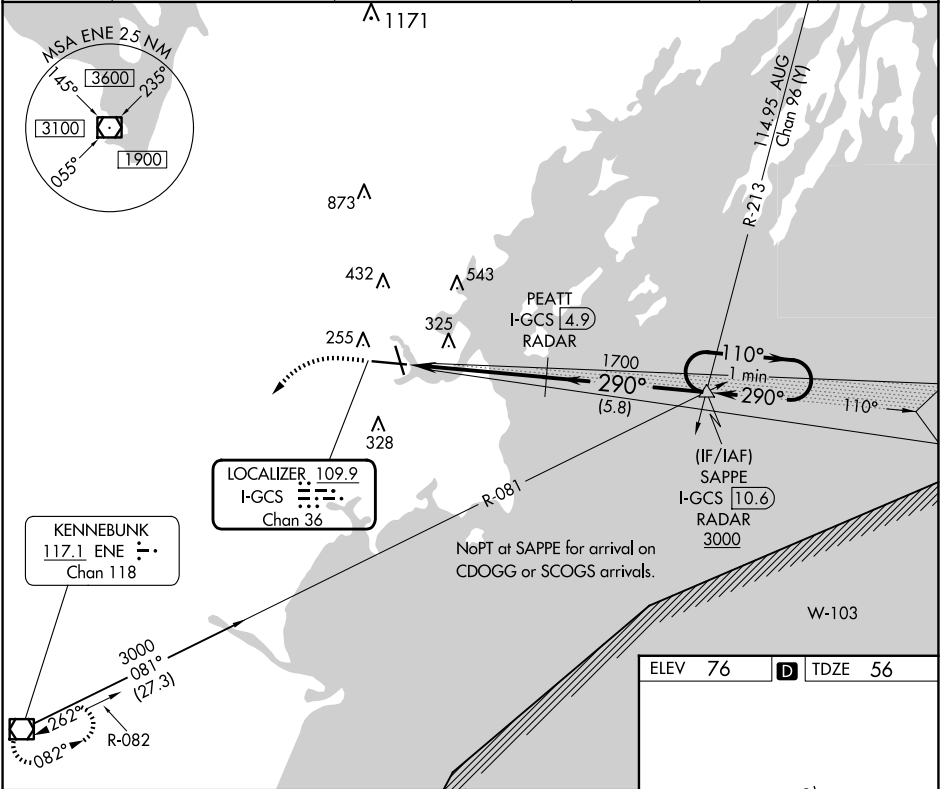
PORTLAND INTL JETPORT (PWM)

V **A** **** RVR 1800 authorized with use of FD or AP or HUD to DA.**
DME or RADAR required.

MAISR

MISSED APPROACH: Climb to 700 then climbing left turn to 3000 direct ENE VOR/DME and hold.

ATIS	PORTLAND APP CON *	PORTLAND TOWER *	GND CON	CLNC DEL	UNICOM
119.05	119.75 269.35	120.9 0 (CTAF) 257.8	121.9	121.9	122.95



700 **3000** **ENE**

*** LOC only** **I-GCS DME ANTENNA** **I-GCS 0.2** **I-GCS 1.4** **PEATT I-GCS 4.9 RADAR** **SAPPE I-GCS 10.6 RADAR** **One Minute Holding Pattern**

1700 **290°** **110°** **3000** **1700** **GS 3.00° TCH 50**

1.5 NM **3.5 NM** **5.8 NM**

CATEGORY	A	B	C	D
S-ILS 29**	256/24 200 (200-½)			
S-LOC 29	580/24 524 (600-½)	580/55 524 (600-1)		
CIRCLING	620-1 544 (600-1)	640-1 564 (600-1)	740-1¾ 664 (700-1¾)	860-2½ 784 (800-2½)

ELEV 76 **TDZE 56**

TDZ/CL Rwy 11 **MIRL Rwy 18-36** **HIRL Rwy 11-29** **REIL Rwys 18 and 36**

FAF to MAP 5.1 NM

Knots	60	90	120	150	180
Min:Sec	5:06	3:24	2:33	2:02	1:42

NE-1, 10 JUL 2025 to 07 AUG 2025

NE-1, 10 JUL 2025 to 07 AUG 2025