

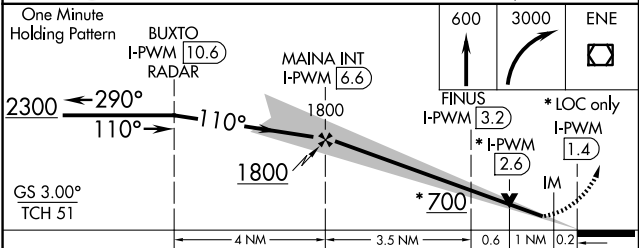
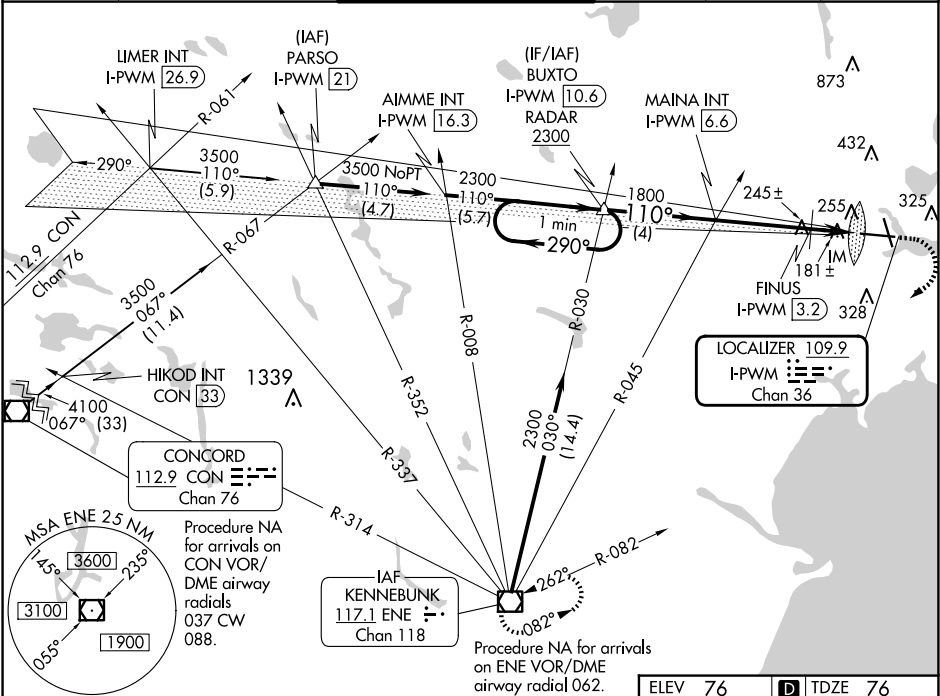
LOC/DME I-PWM 109.9 Chan 36	APP CRS 110°	Rwy Idg 7200 TDZE 76 Apt Elev 76
-------------------------------------------------	------------------------	-------------------------------------------------------------

ILS or LOC RWY 11
PORTLAND INTL JETPORT (PWM)

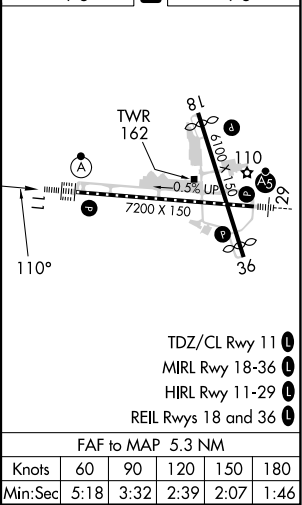
⚠ For inoperative ALSF-2, increase S-LOC 11 Cat C/D visibility to 1½ mile. Increase FINUS fix minimums S-LOC 11 Cat C/D visibility to RVR 5500.

ALSF-2
⚠ MISSED APPROACH: Climb to 600 then climbing right turn to 3000 direct ENE VOR/DME and hold.

ATIS 119.05	PORTLAND APP CON ★ 119.75 269.35	PORTLAND TOWER ★ 120.9 0 (CTAF) 257.8	GND CON 121.9	CLNC DEL 121.9	UNICOM 122.95
-----------------------	--------------------------------------------	-------------------------------------------------	-------------------------	--------------------------	-------------------------



CATEGORY	A	B	C	D
S-ILS 11	276/18 200 (200-½)			
S-LOC 11	700/24 624 (700- ½)	700-1⅓ 624 (700-1⅓)		
CIRCLING	700-1 624 (700-1)	740-1¾ 664 (700-1¾)	860-2½ 784 (800-2½)	
FINUS FIX MINIMUMS				
S-LOC 11	440/24 364 (400- ½)	440/35 364 (400- ⅝)		
CIRCLING	620-1 544 (600-1)	640-1 564 (600-1)	740-1¾ 664 (700-1¾)	860-2½ 784 (800-2½)



NE-1, 10 JUL 2025 to 07 AUG 2025

NE-1, 10 JUL 2025 to 07 AUG 2025