

LOC/DME I-GCS	APP CRS	Rwy Idg	7200
109.9	290°	TDZE	56
Chan 36		Apt Elev	76

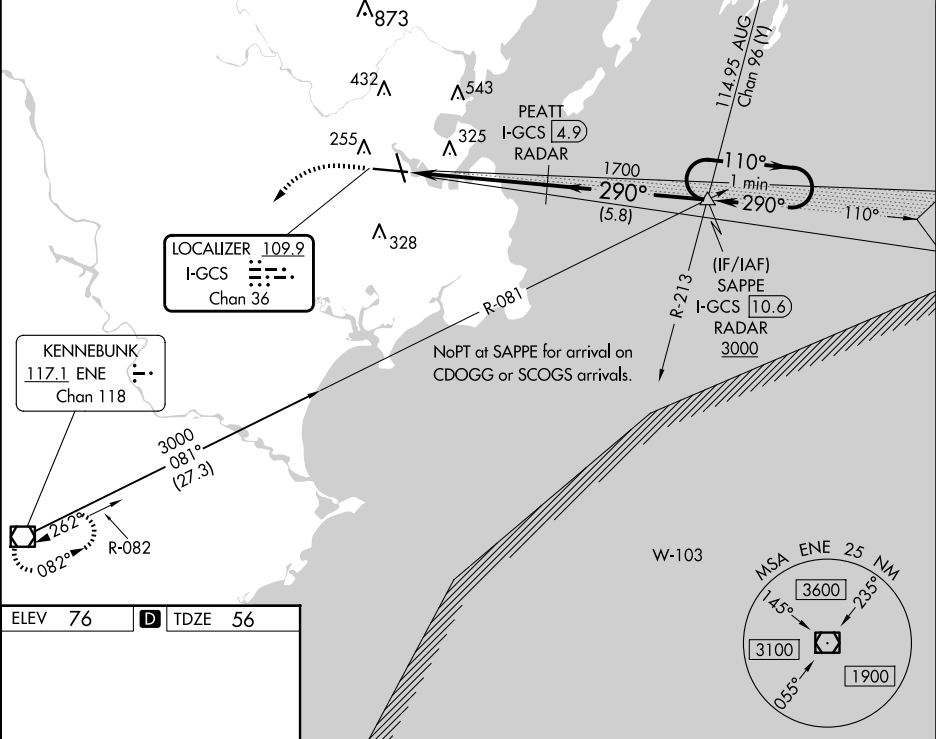
ILS RWY 29 (SA CAT I & II)
PORTLAND INTL JETPORT (PWM)

⚠ DME or RADAR required. DME required when Portland approach control closed.
Procedure NA when control tower closed.
SA CAT I: Requires specific OPSPEC, MSPEC, or LOA approval and use of HUD to DH.
SA CAT II: Reduced lighting requires specific OPSPEC, MSPEC, or LOA approval and use of Autoland or HUD to touchdown.

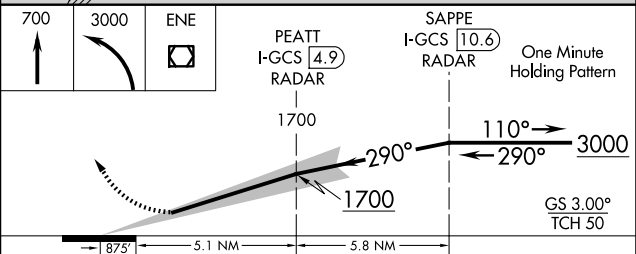
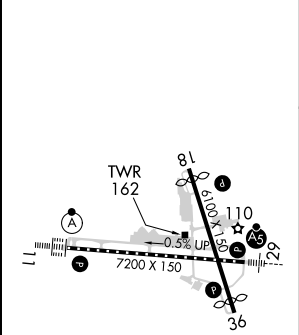
MALSR

MISSED APPROACH:
Climb to 700 then climbing left turn to 3000 direct ENE VOR/DME and hold.

ATIS 119.05	PORTLAND APP CON ★ 119.75 269.35	PORTLAND TOWER ★ 120.9 (CTAF) 257.8	GND CON 121.9	CLNC DEL 121.9	UNICOM 122.95
-----------------------	--------------------------------------------	-----------------------------------------------	-------------------------	--------------------------	-------------------------



ELEV 76	D	TDZE 56
---------	----------	---------



CATEGORY	A	B	C	D
S-ILS 29	SA CAT I	RA 206/14	150 DA 206	
S-ILS 29	SA CAT II	RA 146/12	100 DA 156	

SA CATEGORY I & II ILS - SPECIAL AIRCREW
& AIRCRAFT CERTIFICATION REQUIRED

NE-1, 10 JUL 2025 to 07 AUG 2025

NE-1, 10 JUL 2025 to 07 AUG 2025