

LOC/DME I-PWM <b>109.9</b> Chan <b>36</b>	APP CRS <b>110°</b>	Rwy Idg <b>7200</b> TDZE <b>76</b> Apt Elev <b>76</b>
---	------------------------	---

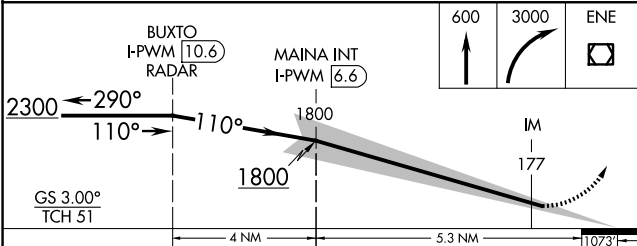
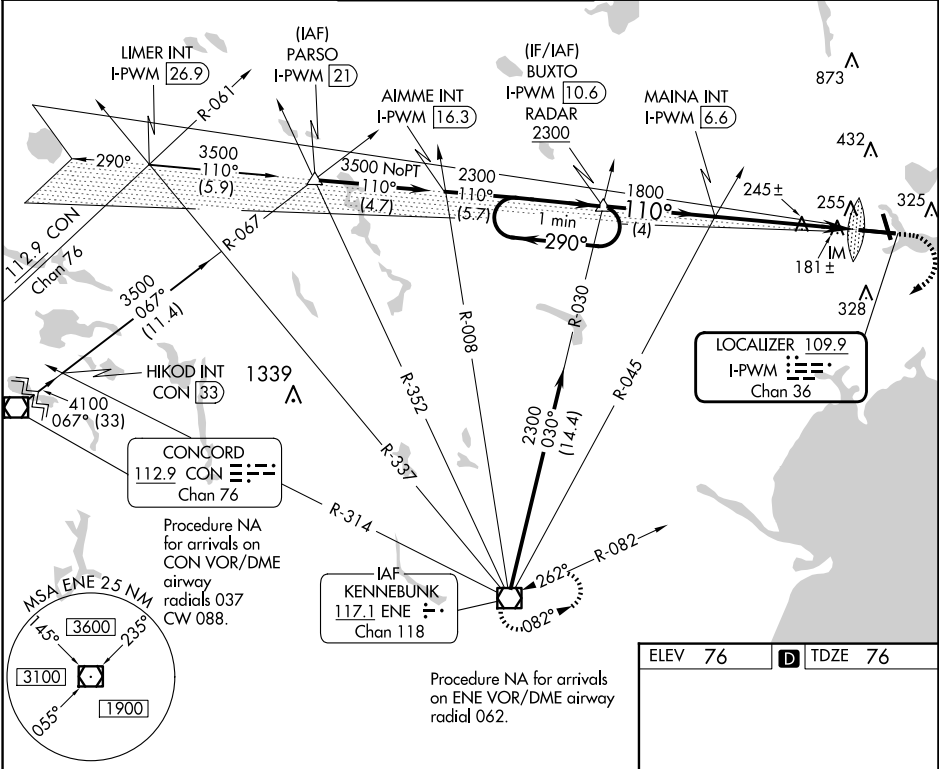
ILS RWY 11 (CAT II & III)  
PORTLAND INTL JETPORT (PWM)

Procedure NA when control tower closed.

ALSF-2

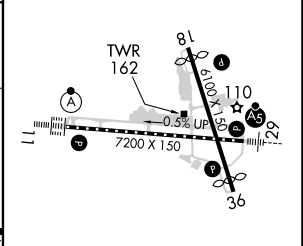
MISSED APPROACH: Climb to 600 then climbing right turn to 3000 direct ENE VOR/DME and hold.

ATIS <b>119.05</b>	PORTLAND APP CON ★ <b>119.75 269.35</b>	PORTLAND TOWER ★ <b>120.9 0 (CTAF) 257.8</b>	GND CON <b>121.9</b>	CLNC DEL <b>121.9</b>	UNICOM <b>122.95</b>
-----------------------	--	---	-------------------------	--------------------------	-------------------------



CATEGORY	A	B	C	D
S-ILS 11	CAT II	RA 108/12	100 DA 176	
S-ILS 11		CAT III	RVR 06	

CATEGORY II & III ILS-SPECIAL AIRCREW  
& AIRCRAFT CERTIFICATION REQUIRED



- TDZ/CL Rwy 11 0
- MIRL Rwy 18-36 0
- HIRL Rwy 11-29 0
- REIL Rwy 18 and 36 0