

NE-1, 10 JUL 2025 to 07 AUG 2025

ATIS 119.05
CLNC DEL 121.9
GND CON 121.9
PORTLAND TOWER ★
120.9 (CTAF) 257.8
PORTLAND DEP CON ★
119.75 269.35
BOSTON CENTER
128.2 322.4

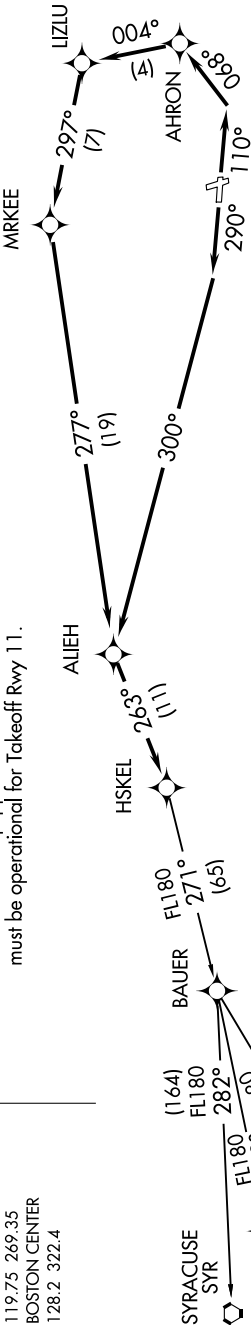
NOTE: For Turboprops only.
NOTE: DME/DME/IRU or GPS required.
NOTE: RNAV 1.
NOTE: Radar required for non-GPS equipped aircraft.
NOTE: For non-GPS equipped aircraft: CON DME must be operational for Takeoff Rwy 11.



(HSKEL3.HSKEL) 21056 AL-329 (FAA) HSKEL THREE DEPARTURE (RNAV)

PORTLAND INTL JETPORT (PWM)
PORTLAND, MAINE

TOP ALTITUDE:
3000



DEPARTURE ROUTE DESCRIPTION

TAKEOFF RUNWAY 11: Climb heading 110° to intercept course 068° to AHRON, then on depicted route to HSKEL, thence....
TAKEOFF RUNWAY 29: Climb heading 290° to intercept course 300° to ALIEH, then on depicted route to HSKEL, thence....

....Maintain 3000 or as assigned by ATC (5000 when tower closed, contact Boston Center). Expect clearance to filed altitude five (5) minutes after departure.

BAUER TRANSITION (HSKEL3.BAUER):
CAMBRIDGE TRANSITION (HSKEL3.CAM):
HANAA TRANSITION (HSKEL3.HANAA):
SYRACUSE TRANSITION (HSKEL3.SYR):

LOST COMMUNICATIONS: If radio contact not established within 2 minutes after departure, proceed on course via HSKEL RNAV route to requested altitude or 10000, whichever is lower.

TAKEOFF MINIMUMS:
Rwy 11: Standard with minimum climb of 350' per NM to 1300.
Rwy 29: Standard.

NOTE: Chart not to scale.

HSKEL THREE DEPARTURE (RNAV) (HSKEL3.HSKEL) 13SEP18

PORTLAND, MAINE
PORTLAND INTL JETPORT (PWM)

NE-1, 10 JUL 2025 to 07 AUG 2025