

VOR/DME PIH	APP CRS	Rwy Idg	9059
112.6	033°	TDZE	4444
Chan 73		Apt Elev	4452

VOR RWY 3

POCATELLO RGNL (PIH)

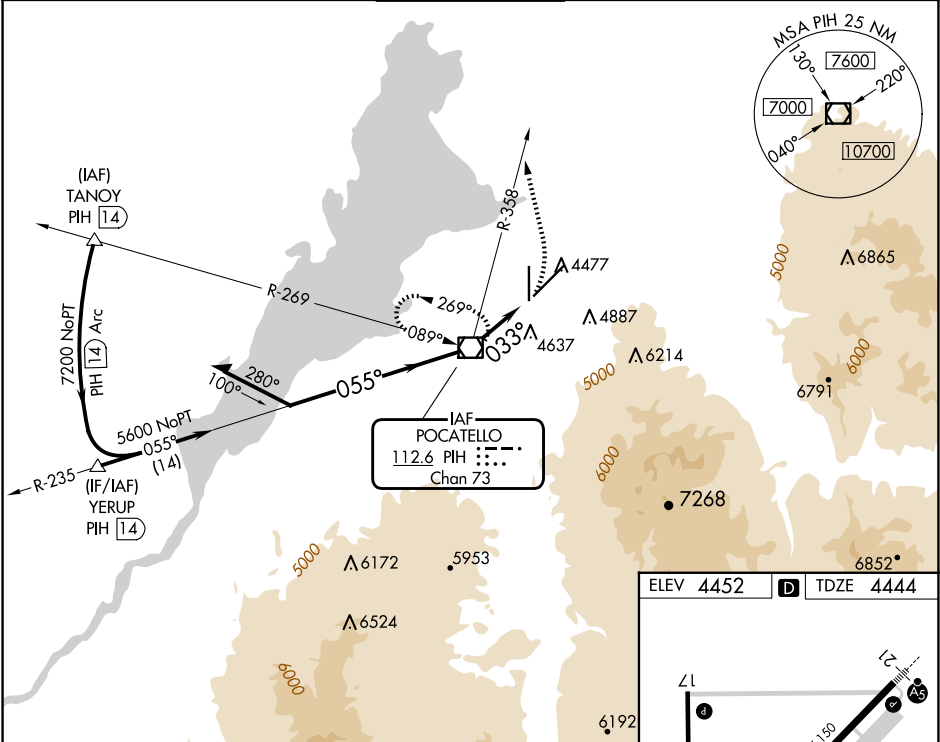
⚠

Circling to Rwy 35 NA at night. When VGSI inop, Straight-In/Circling Rwy 3 procedure NA at night. Circling NA southeast of Rwy 3-21.

Visibility reduction by helicopters NA. When local altimeter setting not received, use Idaho Falls altimeter setting and increase all MDA 140 feet, and increase visibility S-3 Cat C ½ mile and Circling Cat C ¼ mile.

MISSED APPROACH: Climbing left turn on heading 330° and PIH VOR/DME R-358 to 7600 then right turn direct PIH VOR/DME and hold.

ATIS 135.625	SALT LAKE CENTER 128.35 239.25	POCATELLO TOWER* 119.1 (CTAF) 0 257.8	GND CON 121.9	UNICOM 122.95
-----------------	-----------------------------------	--	------------------	------------------



Remain within 10 NM

PIH VOR/DME 7800

7200

235°

055°

5600

3.53° TCH 53

033°

3 NM

VGSI and descent angles not coincident (VGSI Angle 3.00/TCH 53).

hdg 330°

PIH R-358

PIH 7600

PIH 3

ELEV 4452

TDZE 4444

71.50 X 100

9059 X 150

TWR 4560

HIRL Rwy 3-21

MIRL Rwy 17-35

REIL Rwy 3 and 17

CATEGORY	A	B	C	D
S-3	4940-1	496 (500-1)	4940-1 3/8 496 (500-1 3/8)	NA
CIRCLING	5000-1 548 (600-1)	5020-1 568 (600-1)	5060-1 3/4 608 (700-1 3/4)	NA

Knots	60	90	120	150	180
Min:Sec	3:00	2:00	1:30	1:12	1:00