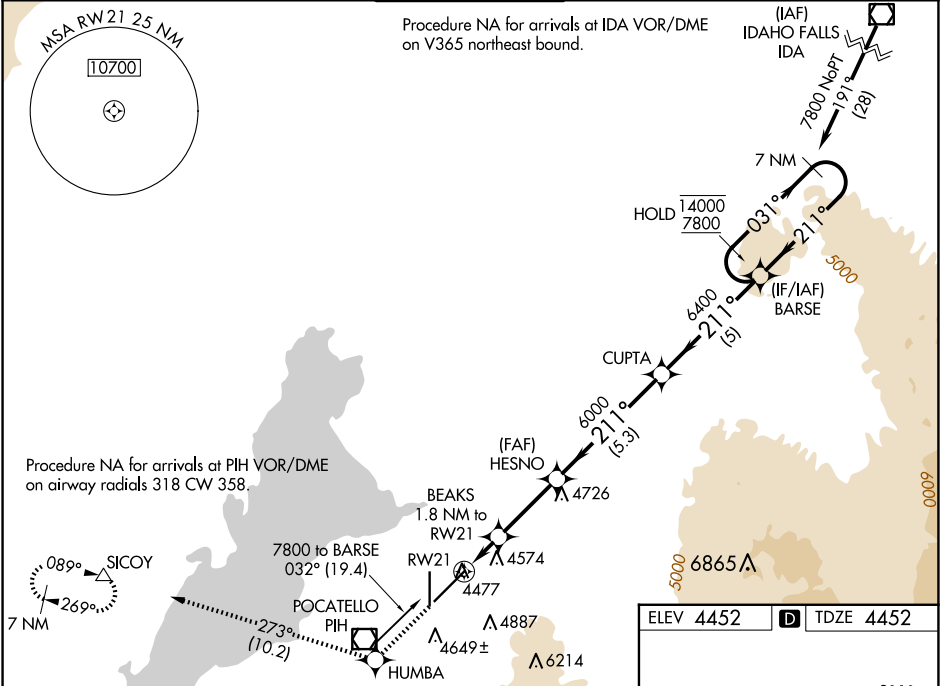


WAAS CH 78212 W21A	APP CRS 211°	Rwy Idg TDZE Apt Elev 9059 4452 4452
--	------------------------	--

RNAV (GPS) RWY 21
POCATELLO RGNL (PIH)

RNP APCH - GPS.	MALSR	MISSED APPROACH: Climb to 7000 direct HUMBA and track 273° to SICOY and hold.
<div><div></div><div></div></div> <div>Circling NA southeast of Rwy 3-21. For uncompensated Baro-VNAV systems, LNAV/VNAV NA below -22°C or above 54°C. For inop ALS, increase LNAV Cat C/D visibility to RVR 5500. *RVR 1800 authorized with use of FD or AP or HUD to DA.</div>	<div><div></div><div>AS</div></div>	

ATIS 135.625	SALT LAKE CENTER 128.35 239.25	POCATELLO TOWER* 119.1 (CTAF) <div><div></div><div>0 257.8</div></div>	GND CON 121.9	UNICOM 122.95
------------------------	--	--	-------------------------	-------------------------



7000	HUMBA	tr 273°	SICOY	VGSI and RNAV glidepath not coincident (VGSI Angle 3.00/TCH 52).
<div><div></div><div></div></div>	<div><div></div><div></div></div>	<div><div></div><div></div></div>	<div><div></div><div></div></div>	
1 NM	0.8 NM	3 NM	5.3 NM	5 NM
CATEGORY	A	B	C	D
LPV DA*		4652/24	200 (200-½)	
LNAV/VNAV DA		4835/35	383 (400-¾)	
LNAV MDA	4820/24	368 (400-½)	4820/35	368 (400-¾)
CIRCLING	4860-1 408 (500-1)	4920-1 468 (500-1)	4920-1½ 468 (500-1½)	5020-2 568 (600-2)

