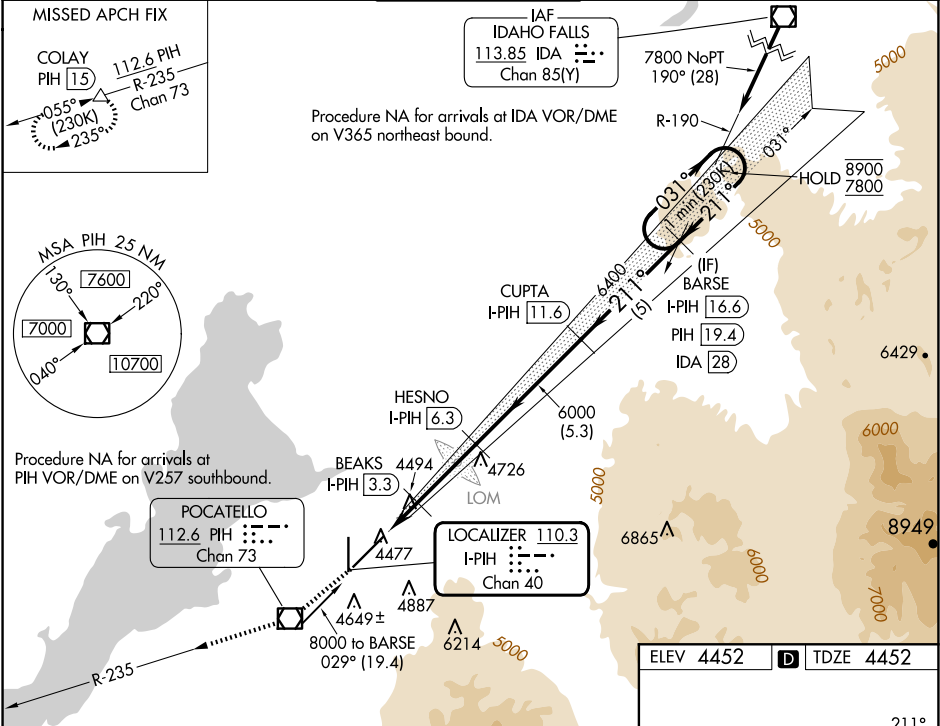


LOC/DME I-PIH 110.3 Chan 40	APP CRS 211°	Rwy Idg TDZE Apt Elev	9059 4452 4452
---	------------------------	-----------------------------	---

ILS or LOC RWY 21
POCATELLO RGNL (PIH)

DME required. ⚠ Circling NA southeast of Rwy 3-21. For inop ALS, increase S-ILS-21 Cat E visibility to RVR 4000, S-LOC-21 Cat C/D/E to RVR 4500. *RVR 1800 authorized with use of FD or AP or HUD to DA.	MALSR 	MISSED APPROACH: Climb to 7000 direct PIH VOR/DME and on PIH R-235 to COLAY/PIH 15 DME and hold, do not exceed 230K in holding pattern.
--	-----------	---

ATIS 135.625	SALT LAKE CENTER 128.35 239.25	POCATELLO TOWER ★ 119.1 (CTAF) 257.8	GND CON 121.9	UNICOM 122.95
------------------------	--	---	-------------------------	-------------------------



7000 ↑ PIH 	PIH R-235 	COLAY 	VGSI and ILS glidepath not coincident (VGSI Angle 3.00/TCH 52).				
Use I-PIH DME when on the localizer course.							
CATEGORY			A	B	C	D	E
S-ILS 21*			4652/24 200 (200-½)				
S-LOC 21			4760/24 308 (400-½)				
CIRCLING			4860-1 408 (500-1)	4920-1 468 (500-1)	4920-1½ 468 (500-1½)	5020-2 568 (600-2)	5060-2¼ 608 (700-2¼)

ELEV 4452	TDZE 4452
-----------	-----------

HIRL Rwy 3-21	MIRL Rwy 17-35	REIL Rwy 3 and 17
---------------	----------------	-------------------

NW-1, 10 JUL 2025 to 07 AUG 2025

NW-1, 10 JUL 2025 to 07 AUG 2025