

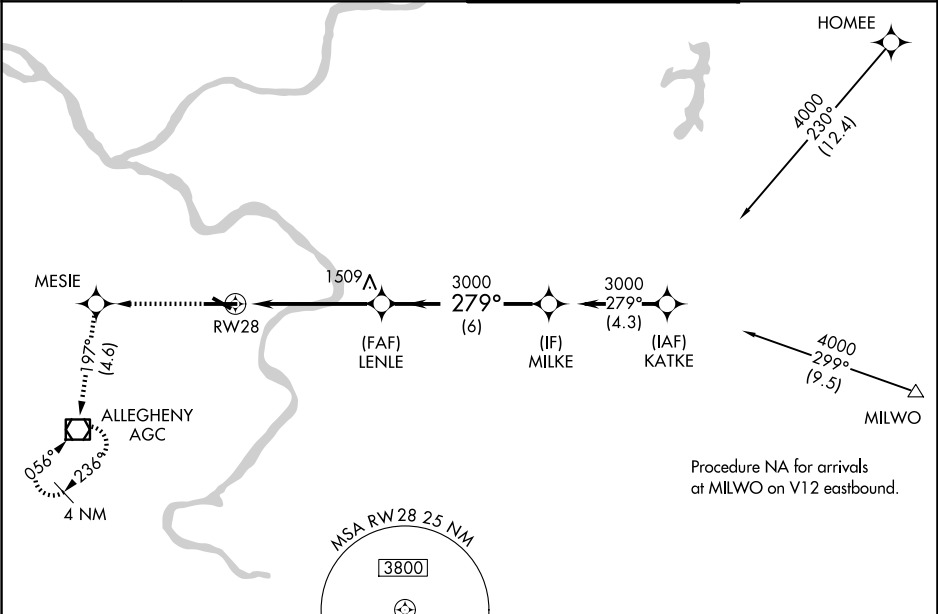
WAAS CH 65625 W28A	APP CRS 279°	Rwy Ldg TDZE 1251 Apt Elev 1252
--	------------------------	---

RNAV (GPS) RWY 28

ALLEGHENY COUNTY (AGC)

RNP APCH - GPS.	MALS	MISSED APPROACH: Climb to 3000 direct MESIE and on 197° track to AGC VOR/DME and hold, continue climb-in-hold to 3000.
For uncompensated Baro-VNAV systems, LNAV/VNAV NA below -16°C or above 54°C. Autopilot coupled approach NA below 1900. Inop table does not apply to LPV, for inop ALS increase LNAV/VNAV all Cats to RVR 4500. Circling Rwy 13 NA at night.		

ATIS 120.55	PITTSBURGH APP CON 119.35 285.575	ALLEGHENY TOWER 121.1 239.0	GND CON 121.7
-----------------------	---	---------------------------------------	-------------------------



ELEV 1252	TDZE 1251
------------------	------------------

