

VOR/DME GLL 114.2 Chan 89	APP CRS 209°	Rwy Idg TDZE Apt Elev N/A N/A 4697
---	------------------------	--

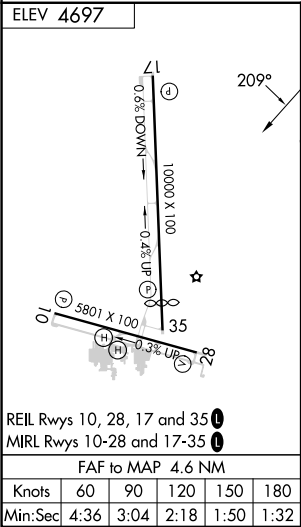
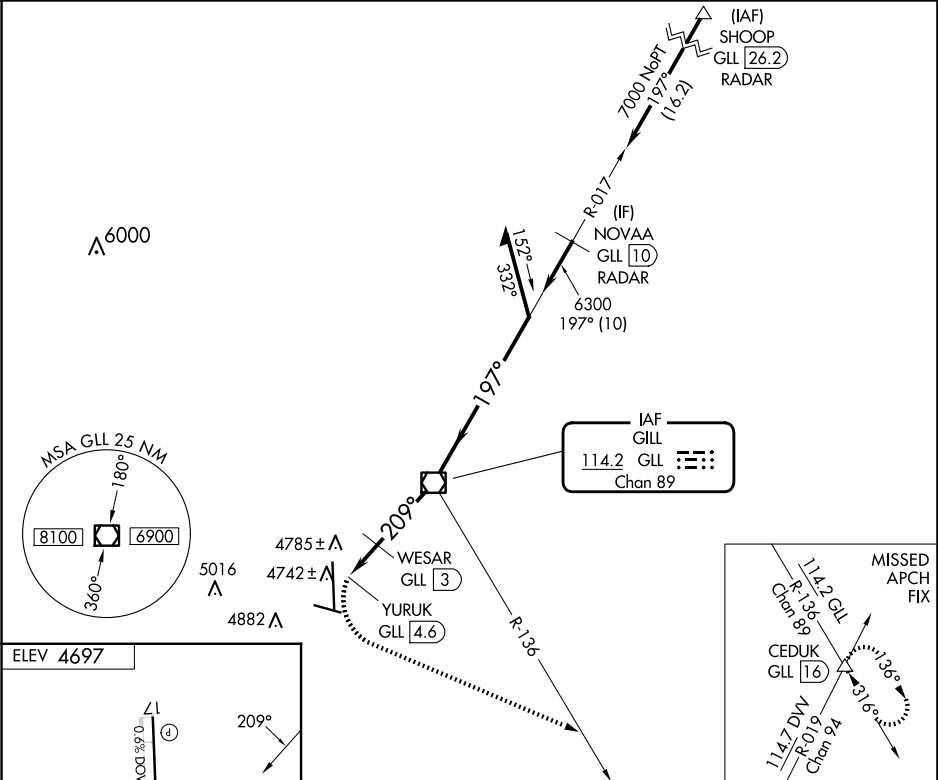
VOR-A

GREELEY-WELD COUNTY (GXY)

When local altimeter setting not received, use Northern Colorado Rgnl altimeter setting and increase all MDA 100 feet and visibility Cat C/D and WESAR fix minimums Cat C/D visibility ¼ SM. DME required.

MISSED APPROACH: Climbing left turn to 7000 on heading 100° and GLL VOR/DME R-136 to CEDUK INT/GLL 16 DME and hold.

AWOS-3PT 135.175	DENVER APP CON 134.85 251.125	CLNC DEL 126.65	UNICOM 122.7 (CTAF)
----------------------------	---	---------------------------	-------------------------------



7000	GLL R-136	CEDUK	GLL VOR/DME	Remain within 10 NM
WESAR GLL 3	YURUK GLL 4.6	5300*	6300	*5400 when using Northern Colorado Rgnl altimeter setting.
1.6 NM	3 NM			
CATEGORY	A	B	C	D
CIRCLING	5300-1	603 (700-1)	5300-1¾ 603 (700-1¾)	5380-2¼ 683 (700-2¼)
CIRCLING	5120-1 423 (500-1)	5200-1 503 (600-1)	5200-1½ 503 (600-1½)	5380-2¼ 683 (700-2¼)