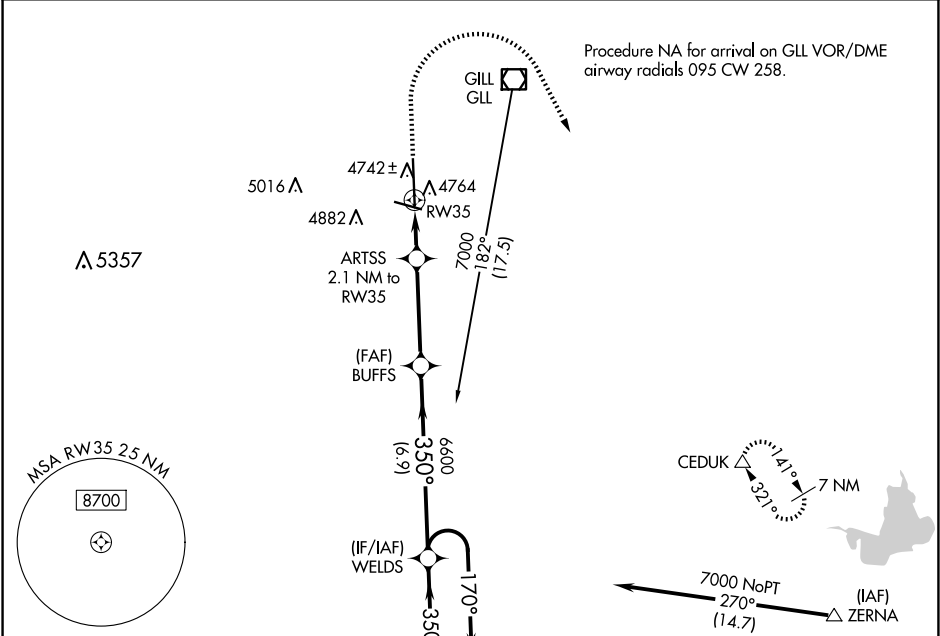


WAAS CH <b>69607</b> <b>W35A</b>	APP CRS <b>350°</b>	Rwy Idg TDZE Apt Elev	<b>8900</b> <b>4665</b> <b>4697</b>
--	------------------------	-----------------------------	---

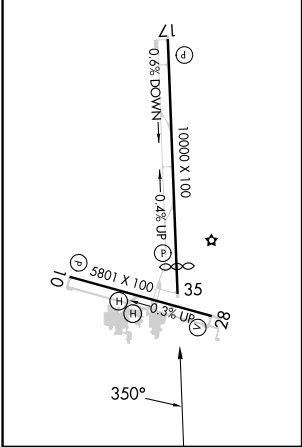
RNAV (GPS) RWY 35  
GREELEY-WELD COUNTY (GXY)

RNP APCH.	MISSED APPROACH: Climb to 5300 then climbing right turn to 7000 direct CEDUK and hold.
For uncompensated Baro-VNAV systems, LNAV/VNAV NA below -24°C or above 54°C.	

AWOS-3PT <b>135.175</b>	DENVER APP CON <b>134.85 251.125</b>	CLNC DEL <b>126.65</b>	UNICOM <b>122.7 (CTAF) 0</b>
----------------------------	---	---------------------------	---------------------------------



ELEV <b>4697</b>	TDZE <b>4665</b>
REIL Rwy 10, 17, 28 and 35	
MIRL Rwy 10-28 and 17-35	



5300	7000	CEDUK				
*LNAV only		ARTSS 2.1 NM to RW35	7 NM Holding Pattern			
*1 NM to RW35		6600	350°	170°	17500	7000
1 NM		1.1 NM	3.9 NM	6.9 NM	GP 3.00° TCH 51	
CATEGORY	A	B	C	D		
LPV DA	4865-3/4		200 (200-3/4)			
LNAV/VNAV DA	4935-7/8		270 (300-7/8)			
LNAV MDA	5020-1 355 (400-1)		5020-1 1/8 355 (400-1 1/8)			
CIRCLING	5120-1 423 (500-1)	5200-1 503 (600-1)	5200-1 1/2 503 (600-1 1/2)	5380-2 1/4 683 (700-2 1/4)		

SW-1, 10 JUL 2025 to 07 AUG 2025

SW-1, 10 JUL 2025 to 07 AUG 2025