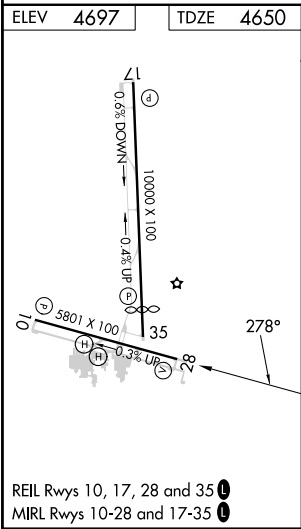
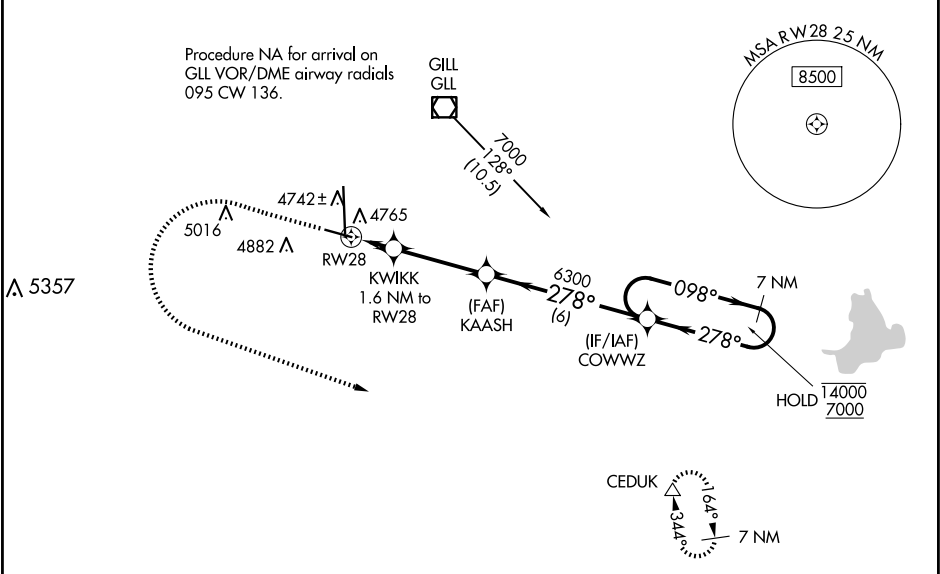


WAAS CH 86808 W28A	APP CRS 278°	Rwy Idg TDZE Apt Elev	5801 4650 4697
--	------------------------	-----------------------------	---

RNAV (GPS) RWY 28

GREELEY-WELD COUNTY (GXY)

RNP APCH.		MISSED APPROACH: Climb to 6300 then climbing left turn to 7000 direct CEDUK and hold.	
Baro-VNAV NA when using Fort Collins/Loveland altimeter setting. For uncompensated Baro-VNAV systems, LNAV/VNAV NA below -24°C or above 54°C. When local altimeter setting not received, use Fort Collins/Loveland altimeter setting: increase LPV DA to 4935 feet and visibility ¼ SM, LNAV/VNAV DA to 5061 feet and visibility ¼ SM; increase all MDAs 100 feet and visibility Cats C and D ¼ SM.			
AWOS-3PT 135.175	DENVER APP CON 134.85 251.125	CLNC DEL 126.65	UNICOM 122.7 (CTAF) 0



6300 7000 CEDUK		VGSi and RNAV glidepath not coincident (VGSi angle 3.00/TCH 27).		7 NM Holding Pattern
*LNAV only		*KWKK 1.6 NM to RW28		
RW28		KAASH 6300		COWWZ 098° 14000 278° 7000
5200		6300		GP 3.00° TCH 50
1.6 NM 3.5 NM 6 NM				
CATEGORY	A	B	C	D
LPV DA	4850-¾ 200 (200-¾)			
LNAV/VNAV DA	4976-1 326 (300-1)			
LNAV MDA	5080-1	430 (400-1)	5080-1½	430 (400-1½)
CIRCLING	5120-1 423 (500-1)	5200-1 503 (600-1)	5200-1½ 503 (600-1½)	5380-2¼ 683 (700-2¼)