

WAAS
CH **72708**
W17A

APP CRS
170°

Rwy Idg
TDZE **4697**
Apt Elev **4697**

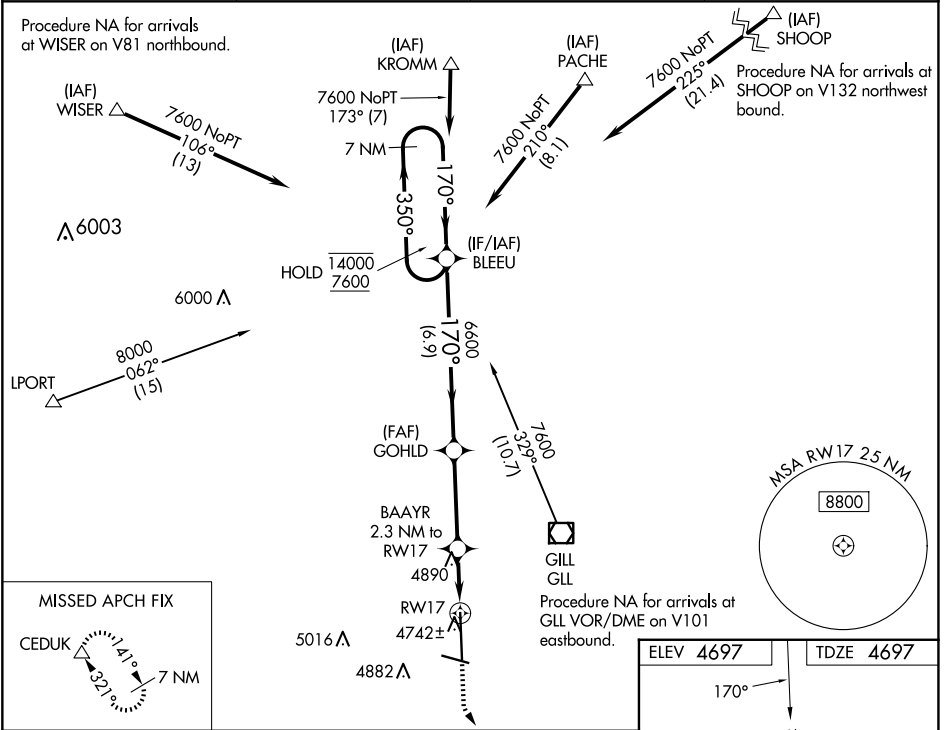
RNAV (GPS) RWY 17

GREELEY-WELD COUNTY (GXY)

RNP APCH.
For uncompensated Baro-VNAV systems, LNAV/VNAV NA below -24°C or above 54°C.

MISSED APPROACH: Climb to 5400 then climbing left turn to 7000 direct CEDUK and hold.

AWOS-3PT 135.175	DENVER APP CON 134.85 251.125	CLNC DEL 126.65	UNICOM 122.7 (CTAF)
----------------------------	---	---------------------------	-------------------------------



7 NM Holding Pattern		BLEEU	GOHLD	BAAAYR 2.3 NM to RW17	5400 ↑	7000 ↶	CEDUK △
14000 ← 350° 7600 → 170°		6600	*5460	*1.2 NM to RW17	*LNAV only		
GP 3.00° TCH 46		6.9 NM		3.5 NM	1.1 NM	1.2 NM	
CATEGORY	A	B	C	D			
LPV DA	4897-¾		200 (200-¾)				
LNAV/VNAV DA	4969-⅞		272 (300-⅞)				
LNAV MDA	5140-1	443 (500-1)	5140-1½ 443 (500-1½)	5140-2¼ 443 (500-2¼)			
CIRCLING	5140-1 443 (500-1)	5200-1 503 (600-1)	5200-1½ 503 (600-1½)	5380-2¼ 683 (700-2¼)			

ELEV 4697

TDZE 4697

170°

0.65% DOWN

10000 X 100

0.43% UP

5801 X 100

0.3% UP

REIL Rwy 10, 17, 28 and 35

MRL Rwy 10-28 and 17-35