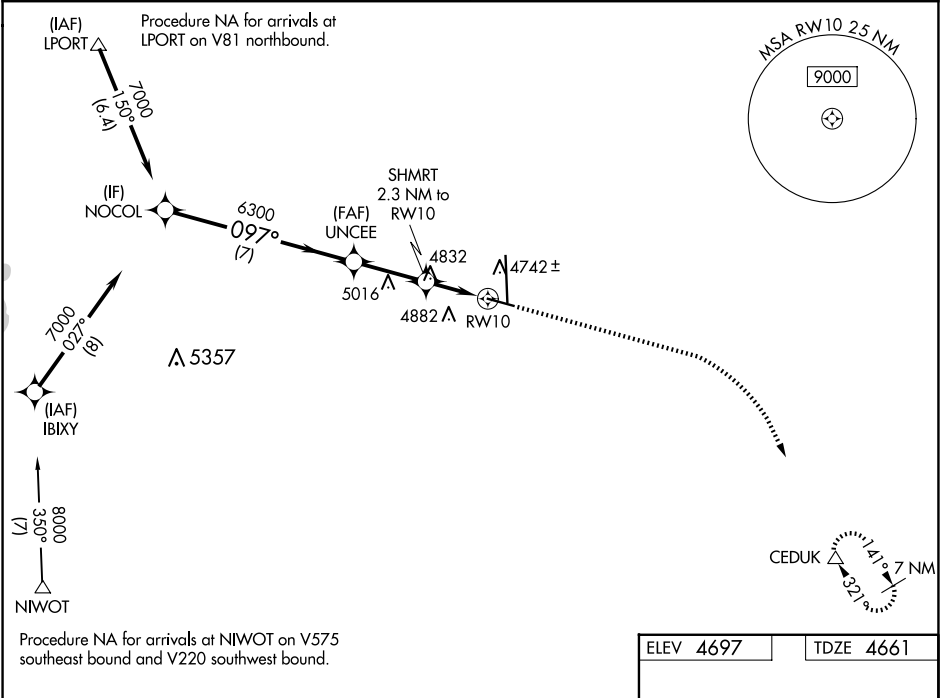


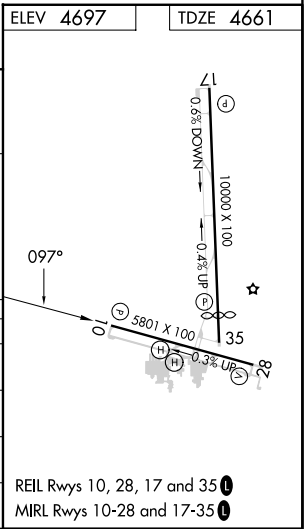
WAAS CH <b>62900</b> <b>W10A</b>	APP CRS <b>097°</b>	Rwy Idg TDZE Apt Elev	<b>5801</b> <b>4661</b> <b>4697</b>
--	------------------------	-----------------------------	---

RNAV (GPS) RWY 10  
GREELEY-WELD COUNTY (GXY)

RNP APCH. ▼ ▲ For uncompensated Baro-VNAV systems, LNAV/VNAV NA below -24°C or above 54°C.		MISSED APPROACH: Climb to 5400 then climbing right turn to 7000 direct CEDUK and hold.	
AWOS-3PT <b>135.175</b>	DENVER APP CON <b>134.85 251.125</b>	CLNC DEL <b>126.65</b>	UNICOM <b>122.7 (CTAF) 0</b>



VGSI and RNAV glidepath not coincident NOCOL (VGSI Angle 3.00/TCH 43).				5400	7000	CEDUK
7000				UNCEE	SHMRT 2.3 NM to RW10	*1.4 NM to RW10
GP 3.00° TCH 50				6300	*5440	
7 NM				2.7 NM	0.9 NM	1.4 NM
CATEGORY	A	B	C	D	*LNAV only	
LPV DA	4911-3/4		250 (300-3/4)			
LNAV/VNAV DA	4920-3/4		259 (300-3/4)			
LNAV MDA	5140-1 479 (500-1)		5140-13/8 479 (500-13/8)			
CIRCLING	5140-1 443 (500-1)		5200-1 503 (600-1)		5380-21/4 683 (700-21/4)	



SW-1, 10 JUL 2025 to 07 AUG 2025

SW-1, 10 JUL 2025 to 07 AUG 2025